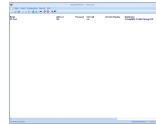


**Menutree Website:**

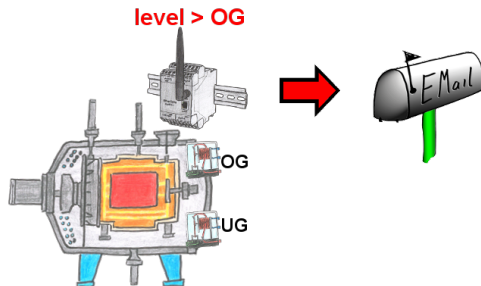
- + Products / docu / downloads
- + Software
  - + PLC-software-tools
  - + PLC – Data safety
  - + Windows

**QR-Code Website:**



Please make sure to update your drivers before using our products.

E-Mail notification



Do you monitor processes and upon reaching a predetermined upper/lower limit, you need a message? Then activate in the device the limit-value-monitoring and you get this message. Furthermore, the device also sends its state and you are always up to date.

## Profinet WLAN panel connection

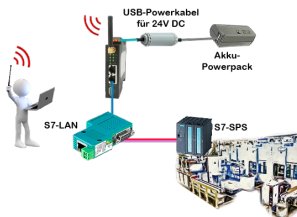


Simply connect your panel to your Profibus via WLAN.

Mobile workplaces are optimally connected.

You will be able to link additional applications such as PDs, visualizations or ERP systems at the same time.

## Independent operation through power-pack-supply



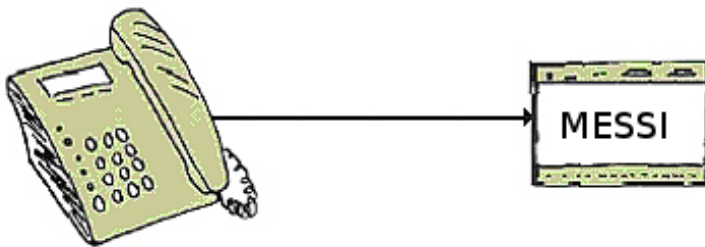
You want for e.g. moving around your system/control and need a 24V-DC-supply for your access-point ALF-UA?

With USB-power-cable and a USB-power-bank/-accu, the problem can be solved immediately with little effort.

## Sensor-networking 4.0



## Remote Maintenance via keyboard and voice



The MESSI remote-station will be called directly by integrated mobile-phone. If a connection comes off, digital In- and Outputs for teleswitching will be transmitted. Each device can both transmit state of things and accordingly receive switch signals.

## S7-PLC over LAN



Communication with S7-PLC via Ethernet, just how and with what?

Data-communication with S7-PLC from PC or other devices via network, which interface is required. Questions you don't have to worry about. With "S7 over LAN" you get the right interface-products for PPI, MPI and Profibus.

Which one you use then is up to you.

## Use on-site without PC-adapter?



With the TeleService-device you can connect serial or by USB-cable to your PC/laptop and then communicate directly with the control without a PC-adapter or other S7-programming cables.

The USB-cable is a standard-cable just as the one you use at your printer.