

**Menutree Website:**

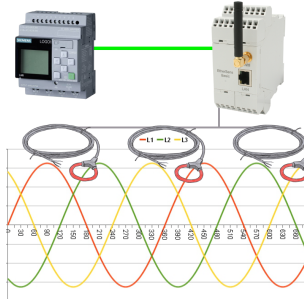
- + Products / docu / downloads
- + Hardware
  - + PD-interface-multiplexer
  - + T-Connector to PPI/MPI-Bus

**QR-Code Website:**



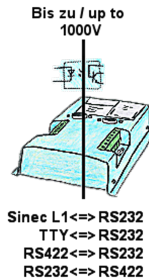
Please make sure to update your drivers before using our products.

Process energy-data with LOGO!



Process of all kinds of the recorded energy-values with the LOGO!-Control

## Interface-converter with galvanic decoupling

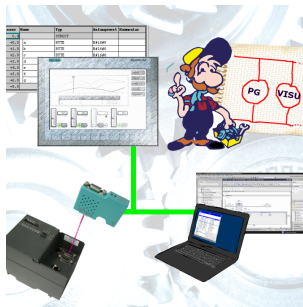


## Coupling of 2 devices with different hardware-interfaces?

Devices of the UNI-COM-series offer the implementation of different hardware-interfaces with simultaneous galvanic-separation of both sides up to 1000V. Connections to the device via screw-terminals or via the integrated D-Sub with screw-locking. Universally usable for every application.

Only a 24V DC supply is required for the converter.

Connect MPI / Profibus with current network panels
--



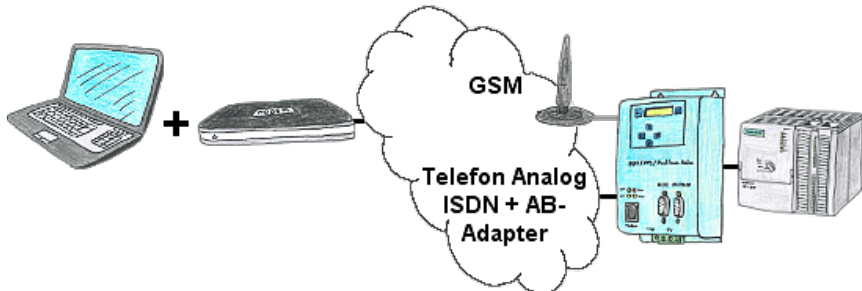
Visualize with the latest S7 network panels directly on your MPI Profibus.

No PLC change necessary.

Connect several nodes at the same time via a network module.

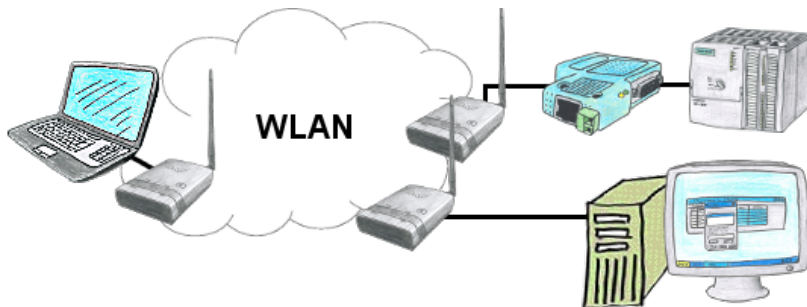
Simultaneous access from different systems possible.

## Remote maintenance / telecontrol of PLC

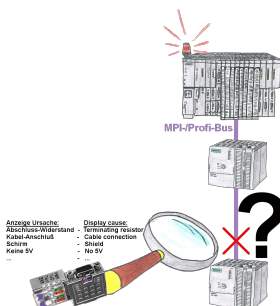


The access to the connected PLC with the Siemens TS-software or PG-2000 including TS-option results of coupling via Analogue-, ISDN- (only with AB-adapter) as well as GSM-line.

## Operation as bridge



You have two or more clients which should communicate together without LAN-cable-connection? No problem, you connect a "Access-Point" configured ALF to this device and to the other device a "Client" configured ALF. Then connect the "Client" with the "Access-Point" and the device are able to communicate together.



Bus problems and no reason apparent?

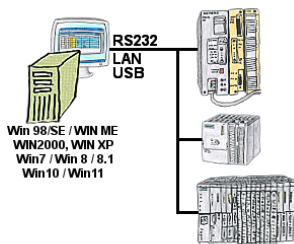
Connect the diagnostic-bus-connector to the "suspicious" PLC and read the possible cause of the fault using the blink-code:

- 5V voltage missing/out of specification
- possible short-circuit in the bus
- No bus-activity on the PLC
- Wrong termination
- Bus is open

...

The bus-connectors of the "DiagConn"-series indicate all of these possible causes of the malfunction. The bus-connector is available in 90°, 45° and 0°-versions. The connectors can be attached instead of the "normal" bus-connectors. There does not have to be a fault,

Programming/controlling of S5/S7[FREWARE without support]-PLC's  
the plugs can generally also be used in the bus and you can later find the cause of any possible failures more easily and quickly.



Program change on your systems and no original programming-package?

With PG-2000, a universal programming system for S5 and S7 controllers [S7 FREEWARE without support], you can make changes to the controllers yourself. Connect the PC with the appropriate interface-product via the COM-, USB- or LAN-port.

One surface for S5- and S7-programming [S7 FREEWARE without support] so you don't have to get used to it. Windows as the operating-system, work with every current version of Windows. Where the original programming packages no longer works, work with PG-2000 ONLINE.