

Menutree Website:

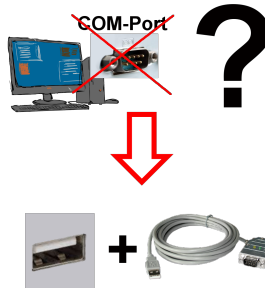
- + Products / docu / downloads
- + Accessories
 - + Connector plug / equipment
 - + Universal DIN-rail mounting

QR-Code Website:



Please make sure to update your drivers before using our products.

Virtual COM port for PCs



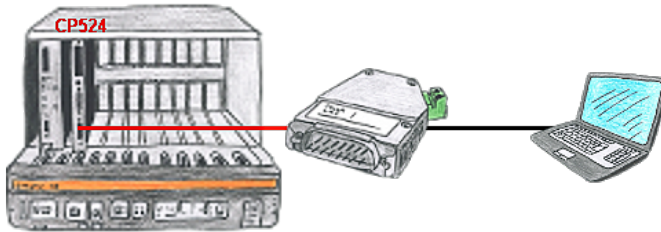
Receive new PC and detected missing serial COM port, but it is mandatory?

With a USB-serial-converter, you create a virtual COM-port on your PC, which can also be recognized and used by most applications/apps. The only difference to a "real" physical COM-port is that there is no interrupt-number and address. Under Windows usually no problem. Applications that are still MSDOS-based such as Step5 of Siemens are not functioning with virtual COM-ports. This problem is solved with the available "S5-Patch". USB-serial-converter-cable also works with STEP5 from Siemens.

Not every USB-serial-converter supports all transfer parameters, most "cheap" only the format "8-N-1". USB-serial-converter-cable supports all possible transmission settings. To the cable you get the USB driver for your Windows-PC.

Two in the metal housing integrated LEDs shows the signal-flow with RXD- and TXD-display.

Visualisation via 3964R-interface without using the protocol itself



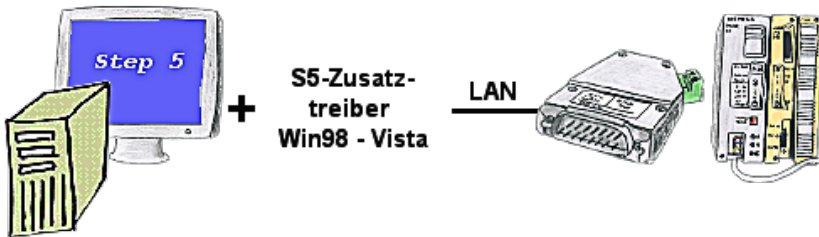
Your visualisation-software does not support a 3964R-protocol, but you have to apply this package? No problem, connect the 3964R-LAN to your CP and activate the RFC1006-emulation in the module. Now your software gets the data from the module via RFC1006, which in turn communicates with the assembly via 3964R.

Remote-maintenance Pilz-PLC with firewall



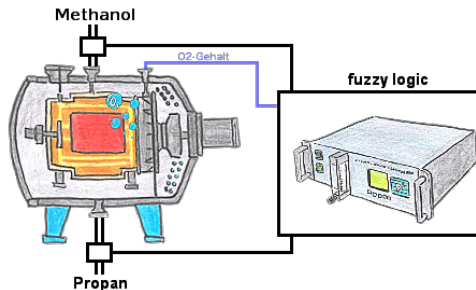
Remote-maintenance of a Pilz-controller with network-connection via secure VPN-tunnel and scalable firewall

Communication with Win98 – XP/Vista/7/8/10/11 via network to S5-PLC



You still have a PC with Win98 and a MS-DOS-based Step5-package and would like to go Online on your S5-PLC via LAN? No problem, the provided virtual Com-Port PLCVCom emulates a COM-port on your PC with which you go Online. Even your MS-DOS-based Step5-software on this WIN98-PC can use this virtual Com-Port. With a patchtool for the Siemens Step5-software, which is provided as well, nothing else stands in your way to communicate via LAN.

Fuzzy controller with the OSC-II



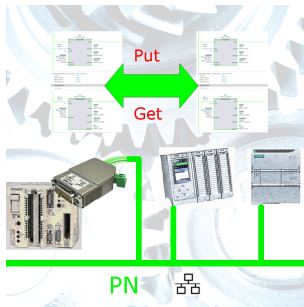
Through 3 free configurable limits (of each kind) you wont be able to realice a fuzzy-controller of your heat treatment furnace.

Remote-maintenance Siemens-S5-PLC



Remote-maintenance of a Siemens-S5-controller with S5-LAN++ on PD-port via secure VPN-tunnel of the TeleRouter

S7-1200/1500 to S5



Coupling S7-controller with PN-port at S5-controller with PD-port via network