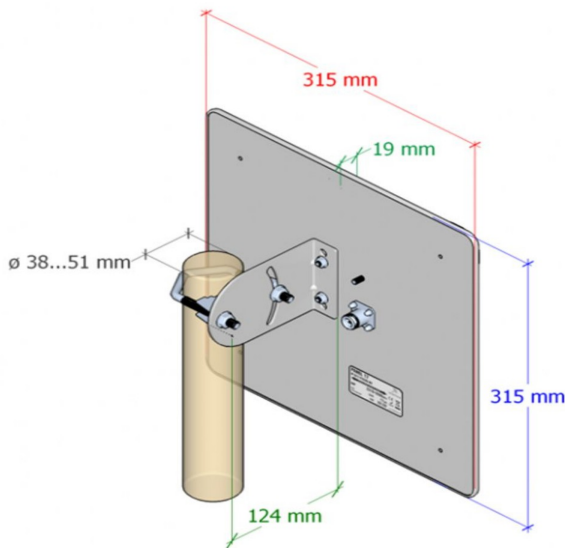


## Assembly instructions Beam-antenna for ALF

### Fundamental:

This antenna is a beam-antenne designed for the 2.4 GHz WLAN frequency band with a performance gain of 17dbi. Through the rich performance gain and the strong signal bundling, very high distances can be bridged. The assembly takes place on a rod with diameter 38 - 51mm. The antenna cable must be tightly screwed after assembly, mounting the two antennas in direct alignment to each other.

### Installation:



**Attention:** No liability for performance or durability problems, losses are taken over if the assembly was not carried out according to this manual.

(c) copyright 2000-2025 by TPA

**Menutree Website:**

- + Products / docu / downloads
- + Accessories
  - + Antennas / Accessories
  - + Beam antenna for ALF

**QR-Code Website:**



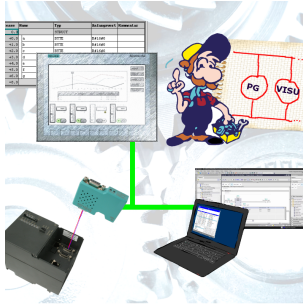
Please make sure to update your drivers before using our products.

Wireless around the Beckhoff-PLC



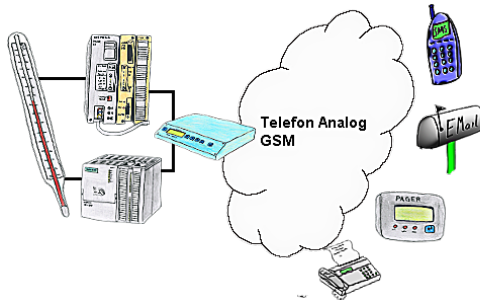
Move wirelessly around the Beckhoff-PLC and communicate for example ONLINE in the status

## Connect MPI / Profibus with current network panels



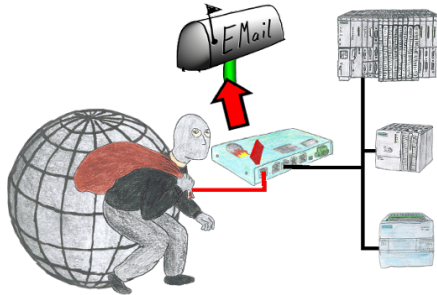
Visualize with the latest S7 network panels directly on your MPI Profibus.  
No PLC change necessary.  
Connect several nodes at the same time via a network module.  
Simultaneous access from different systems possible.

## Failure report transmission released by the PLC



Your outstation reports the current value cyclically, or in case of malfunction the status via FAX, to your mobile phone as SMS or to your pager.

## Log messages via e-mail



You want to be informed of access violations and range errors in the communication with your controls? No problem, with the S7-firewall you can be informed about each of these attacks / injuries by email to determine each polluter.

## Wireless around the Eaton-PLC



Move wirelessly around the Eaton-PLC and communicate for example ONLINE in the status