

**Menutree Website:**

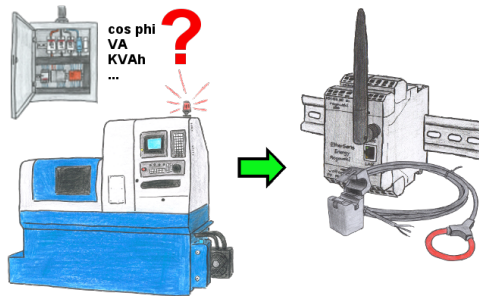
- + Products / docu / downloads
- + Accessories
  - + Connector plug / equipment
  - + CheapConn-plug with 24V-cable-out

**QR-Code Website:**



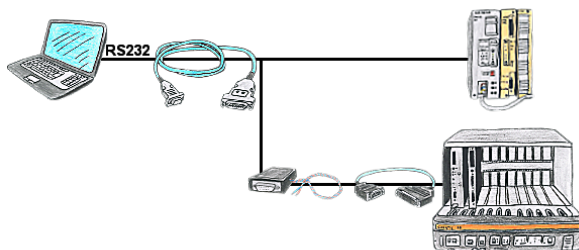
Please make sure to update your drivers before using our products.

Energy-data acquisition



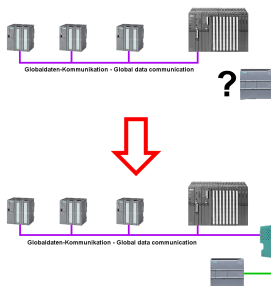
Do you also need the energy-consumption of your plant or need to determine the  $\cos \phi$ ?  
With the EtherSens Energy you can capture and record by using a Rogowski-coil or folding-core the required values.

## Serial communication to the S5-PLC



You have a PC with programming software and a 9pin COM-port as interface? No problem, for this purpose the PG-UNI-II-cable is exactly the right product. Connect it to PLC and PC and you're Online. The communication itself is visible by the both included LEDs. Even the 25pin interface of the AS511-card is no problem. You need the NETZ-adapter and also the AG-150-adapter and then this control is programmable, too.

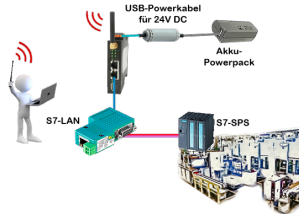
## Global data communication (MPI) also with network-PLC



Running global-data-communication between MPI-PLCs (S7-300/400), is one of these PLCs replaced with a newer PLC with network-interface (S7-1200/1500), this PLC was not able to access this data.

Simply configure the global-data of the “old” PLC via the web-server in the S7-LAN-module. Enter the new PLC as a TCP/IP-connection-partner and the module writes/reads the data via PUT/GET from this network-PLC and passes it on as before.

## Independent operation through power-pack-supply



You want for e.g. moving around your system/control and need a 24V-DC-supply for your access-point ALF-UA?

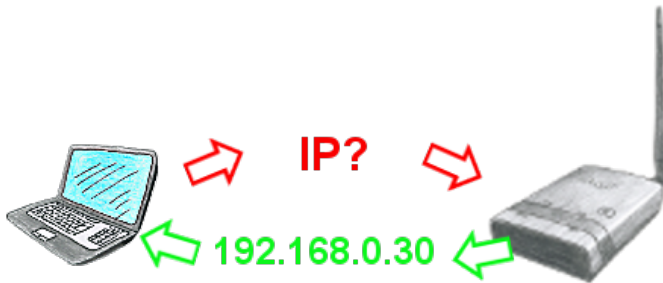
With USB-power-cable and a USB-power-bank/-accu, the problem can be solved immediately with little effort.

## Remote-maintenance Beckhoff-PLC with firewall



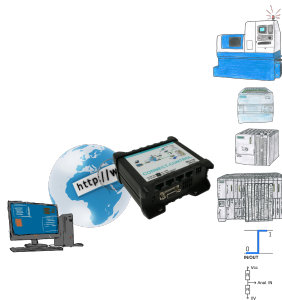
Remote-maintenance of a Beckhoff-controller with network-connection via secure VPN-tunnel and scalable firewall

## Integrated dhcp-server



You use your PC in your company network with DHCP, so you don't have to care the everlasting setting of the ip-address. No problem, ALF also can be configured as a DHCP-server and assigns you accessing to the device via LAN or WLAN an ip-address from a predefined address range.

## Universally on machine and PLC



Remote access to all your systems, PLCs without great effort. Even triggering of actions by setting the integrated digital-outputs or reading in the digital and analog-inputs is possible via the Internet connection.

Regardless of whether you use your PC with the CONNECT-software or have connected a device from the CONNECT-family. Couplings via LTE also enable access to the LAN-interface on the system side. No special SIM-card is required for this.

A solution with little effort and everything within your "private" cloud.