

**Menutree Website:**

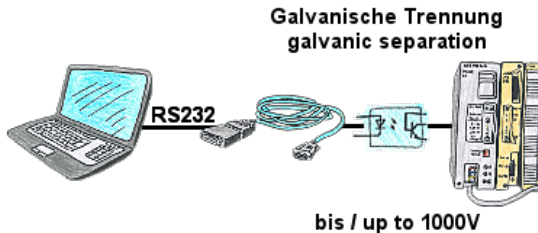
- + Products / docu / downloads
- + Accessories
  - + Connection cable / adapter
  - + USB
  - + USB 2.0 connection cable type A/M

**QR-Code Website:**



Please make sure to update your drivers before using our products.

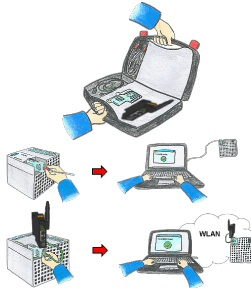
Galvanic coupling to the S5-PLC (CPU-assemblies 15pin)
--



S5-PLC-communication, high-quality PC and fear of interfaces, unsure whether the PLC is grounded or the PLC is in an unsafe environment. Galvanic-separation is the most practical solution. "PG-ISO-Set" (PG-UNI-cable + PG-ISO-adapter) galvanically separates the coupling to the connected S5-PLC, offers protection of the PCs up to a voltage difference of 1000V.

If galvanic-isolation is not required, remove the PG-ISO-adapter and use the PG-UNI-cable like a standard S5-interface-cable.

No external supply necessary, function on 15-pin PG-interfaces. Earth objects between the PC and the S5-PLC are separated.



Communication with S5/S7-PLC (mainly), whether wired or via WIFI?

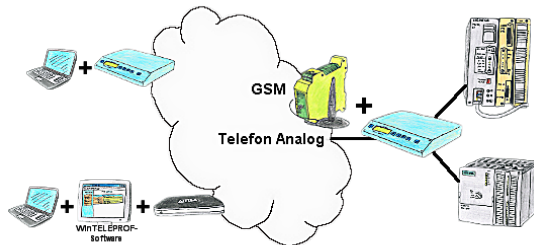
Universally armed for all requirements with the WIFI-sets, regardless of whether it is an S7-PLC, S5-PLC or a controller from another manufacturer with a LAN connection, having everything with you, depending on the used set, is your advantage.

- \* S5-LAN++ or S5-BRIDGE for S5-PLC
- \* S7-LAN or S7-BRIDGE for S7-PLC (PPI/MPI/Profibus)
- \* ALF-UA as a pure converter from Ethernet to WIFI
- \* Patch-cable or Cross-cable in order to act also wired

With the WIFI-Set you simply have everything with you in a handy case, be prepared for everything.

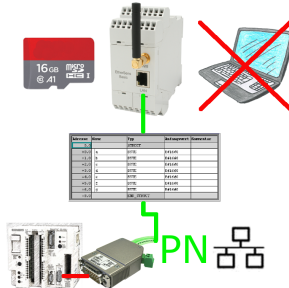
Remote maintenance / telecontrol of PLC-devices

~~This makes (on-site-) work a pleasure.~~



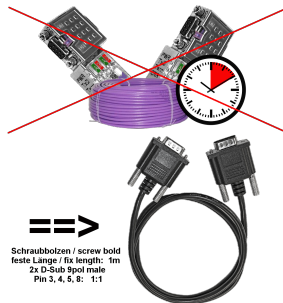
Access to the connected PLC takes place by coupling via Analogue-, ISDN- (only with AB-adapter) and GSM-(only with external GSM-modem)-line.

## Data backup S5-PLC on SD-card



S5-PLC triggered DB-backup/-restore without additional PC via PG-socket and Ethernet on SD-card

## Save time and money



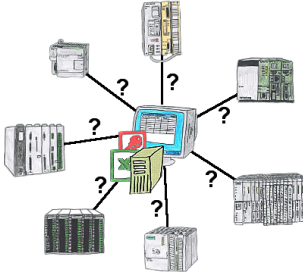
Connect panel to PLC or PLC to PLC, why waste time and money unnecessarily?

Get an expensive bus-cable, screw the bus-connector and also make the classic mistake in the wiring (shield-connection to bus-line). Why all this effort when there is a ready-made solution:

MPI/Profibus-connection-cable with a length of 1m, cast D-Sub-housing with screw-bolts. Only the signals A + B (bus itself), ground and RTS-AS are 1to1 applied, so no problems with possible voltages, compensating currents.

Simply plug it on to the MPI- or Profibus-interface, screw it on and communicate.

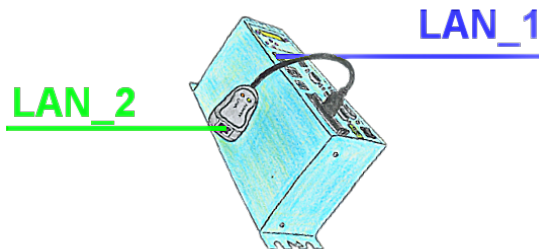
## Communication with PLCs without knowledge of the specific protocol



Who does not know the problem for a production-analysis still lack data that is stored in the controller. Without PLC-specific programming-packages you can not get the data and the software-technician has no time.

A one-time change to the evaluation-tool, the PLC-specific DLL-file integrated (also at Excel, Access, ...) and functions for reading and writing data of the controller are available.

## Separate your machine-net from the office-net



You need a separation between the machine-net and the office-net? No problem, plug a PCMCIA-LAN-card in your Tele-Prof-II-device (only for version -H) and the separation is OK. You have access to both nets via remote maintenance.