

Menutree Website:

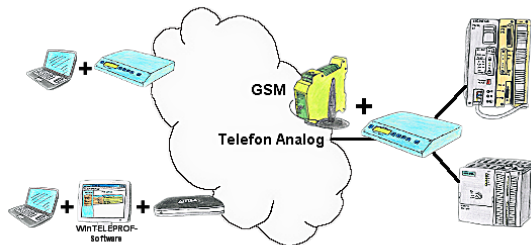
- + Products / docu / downloads
- + Accessories
 - + Various PLC-/Panel-connection-cable
 - + PLC-connection cable

QR-Code Website:



Please make sure to update your drivers before using our products.

Remote maintenance / telecontrol of PLC-devices



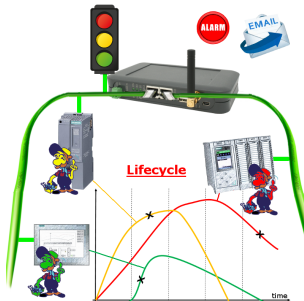
Access to the connected PLC takes place by coupling via Analogue-, ISDN- (only with AB-adapter) and GSM-(only with external GSM-modem)-line.

Wireless around the Moeller-PLC



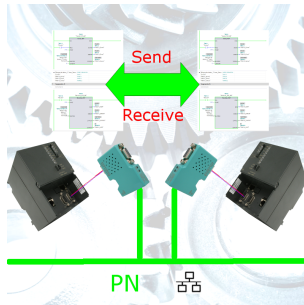
Move wirelessly around the Moeller-PLC and communicate for example ONLINE in the status

Profinet life cycle monitoring



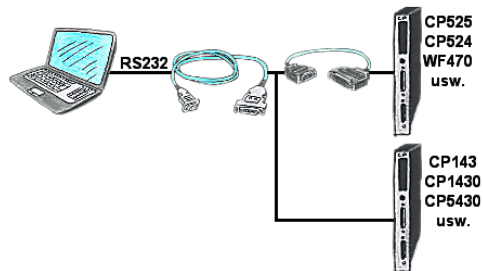
Identify impending failures in your Profinet.
Creeping aging will be displayed to you very detailed.
The Profinet-Watchdog give you the change to react before something happens.

S7-300/400 (MPI/DP) to S7-300/400 (MPI/DP)



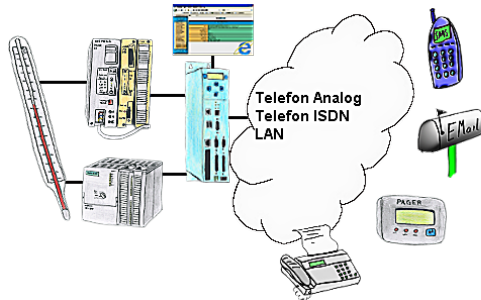
Coupling S7-controller with MPI/Profibus at S7-controller with MPI/Profibus via network

Serial communication with CP and more S5-assemblies



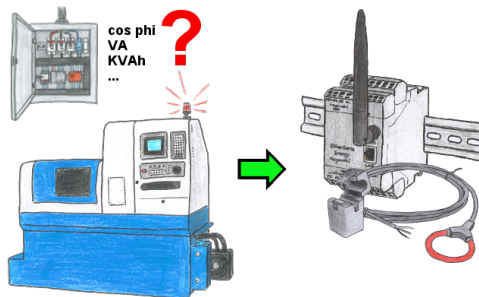
You have a PC with programming software and a 9pin COM-port as interface? No problem, for this purpose the PG-UNI-II-cable is exactly the right product. Connect it to a Siemens assembly such as H1-CP (CP1430), WF470 and PC or CP-525 with the CP525-adaptor and PC and you're Online.

Failure report transmission without any change in the PLC programm



Your outstation reports the current value cyclically, or in case of malfunction the status via FAX, as SMS to your mobile phone, to your pager or also via e-mail. And this without an intervention of the PLC-program. Here the variables and actions are stored and processed in the TP-II.

Energy-data acquisition



Do you also need the energy-consumption of your plant or need to determine the $\cos \phi$? With the EtherSens Energy you can capture and record by using a Rogowski-coil or folding-core the required values.