

Handling-Short Instruction for

MESSI NG 2G / 3G V1.0



The Messi is a fault-messenger which sends its fault-messages via the GSM-network. As a result, it is not affected by german telekom's switch to the digital telephone-network.

Power Supply MESSI

Connect the following voltage to input terminals 41 and 42:

Terminal 41: +12V DC up to +24V DC

Terminal 42: 0V

Terminal 43: can be used as replacement-supply with accu-pack . Read more in the device-manual.

Software drivers do not need to be installed.

Configuration of MESSI

All data and parameters which are necessary for the operation of MESSI NG are entered via the web-interface. Please use Mozilla Firefox browser to configure the web-server.

Microsoft Internet-Explorer is not suitable for this configuration.

Preparation

Connect the MESSI NG to your PC or to your existing network with a network-cable. If the control-lamps on the network-socket do not light up, you have to use a crossover-network-cable.

The IP-address of MESSI NG is shown in the display. If necessary, change the IP-settings of your PC so that it is in the same subnet as MESSI NG.

If MESSI NG has the IP address:

192.168.1.200 (factory-settings),

please set up your PC, for example to 192.168.1.3.

You can open the web-interface of MESSI NG with <http://192.168.1.200>. The web-interface transfers only the absolutely needed data, so a smooth processing of programming is possible. After entries on the configuration-pages, please use the save-button to store this settings. Please don't use the back- and forward buttons of the browser.

The browser must allow the processing of javascript.

Country-specific settings for the cellular network

Due to the technical development of the cellular network, some existing cellular standards will no longer be available.

Unfortunately, the dismantling is carried out according to different guidelines in the individual countries.

The 2G network has not been available in Switzerland since 2020.

The 3G networks in Germany will be switched off in the course of 2021.

Depending on where the MESSI NG 3G is used, this requires differentiated settings.

These are to be set in the “General Settings” (see also chapter “4.3.1 General Settings” in the manual) under “Network Type”.

For use in Switzerland:

Here the MESSI NG 3G must be set to the 3G network:

Network Type: 3G

For use in Germany:

Here the MESSI NG 3G must be set to the 2G network:

Network Type: 2G

<https://www.tpa-partner.de>

(c) copyright 2000-2025 by TPA

Menutree Website:

- + Products / docu / downloads
- + Hardware
 - + Error messaging
 - + MESSI NG 3G

QR-Code Website:



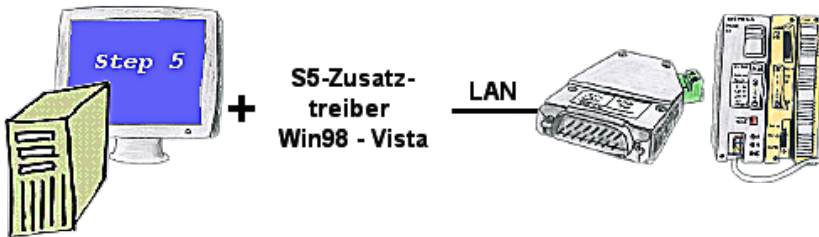
Please make sure to update your drivers before using our products.

Wireless around the Moeller-PLC



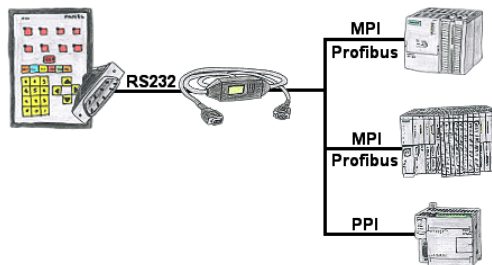
Move wirelessly around the Moeller-PLC and communicate for example ONLINE in the status

Communication with Win98 – XP/Vista/7/8/10/11 via network to S5-PLC



You still have a PC with Win98 and a MS-DOS-based Step5-package and would like to go Online on your S5-PLC via LAN? No problem, the provided virtual Com-Port PLCVCom emulates a COM-port on your PC with which you go Online. Even your MS-DOS-based Step5-software on this WIN98-PC can use this virtual Com-Port. With a patchtool for the Siemens Step5-software, which is provided as well, nothing else stands in your way to communicate via LAN.

Visualisation of your S7- PLC via COM-Port



Your panel provides a serial port and no MPI/Profibus for connecting a S7-PLC. Connect the MPI/PPI-cable with it and you're Online with your panel.