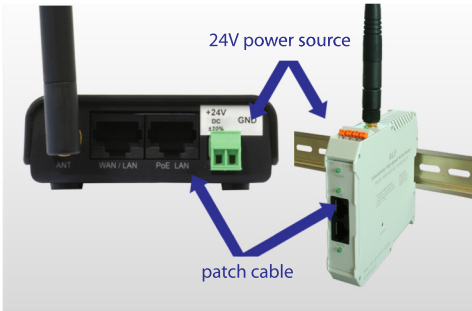
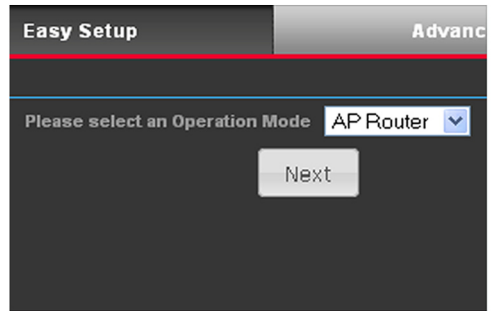


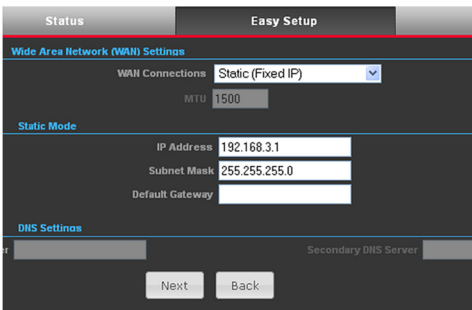
Using S7-LAN with an ALF as a WLAN Router



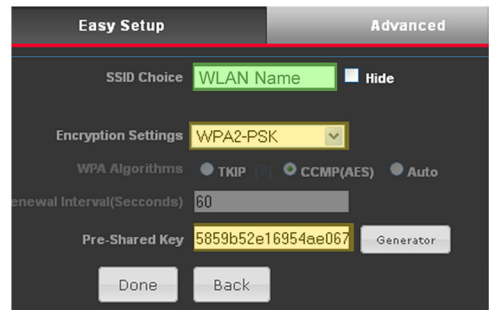
- 1 Connect the 24V power source and the computer to configure



- 2 Select „AP-Router“ on menu „Easy Setup“



- 3 Configure your IP address and subnet mask



- 4 Now configure your networkname and encryption
Our recommended encryption is WPA2

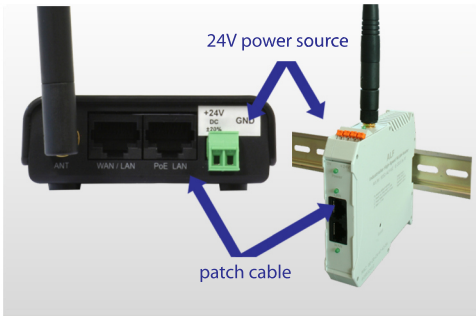


- 5 Connect the S7-LAN with a patch cable
Your S7-LAN is now available from every WLAN participants

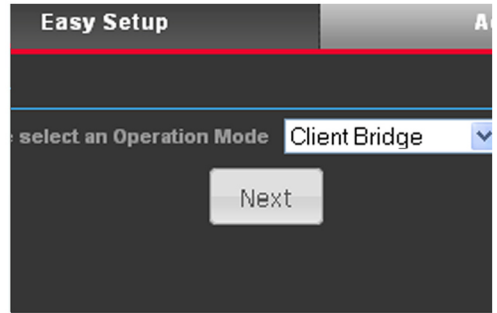


- 6 Installing TIC driver
TIC driver available on www.tpa-partner.de

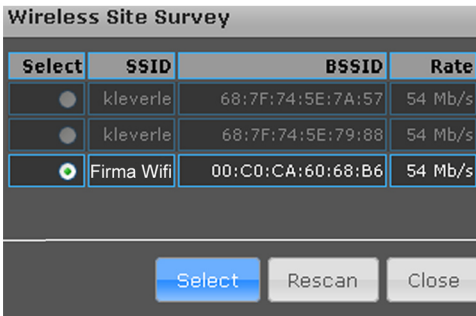
Integrate a S7-LAN in a available WLAN with an ALF



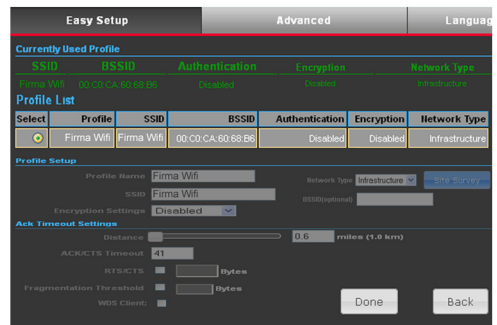
- 1 Connect the 24V power source and the computer to configure



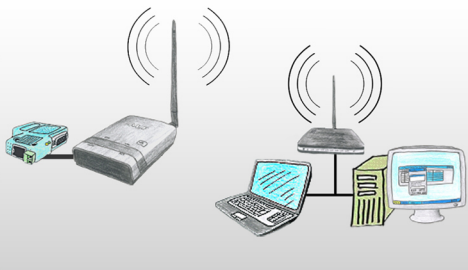
- 2 Select „Client Bridge“ on menu „Easy Setup“



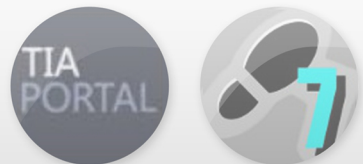
- 3 Press „Site Survey“ to search every WLAN and select your WLAN



- 4 Select your WLAN and enter your password. Press „Done“ to confirm

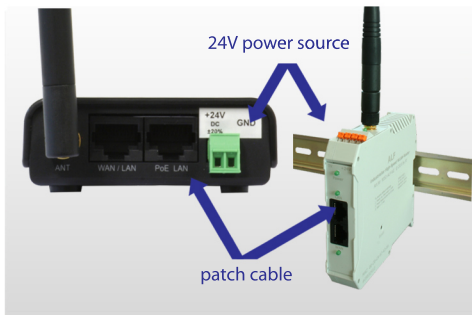


- 5 Connect the S7-LAN with a patch cable
Every network has to be in the same IP area
Your Module is now integrated

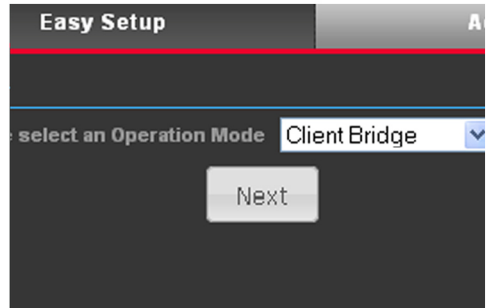


- 6 Installing TIC driver
TIC driver available on www.tpa-partner.de

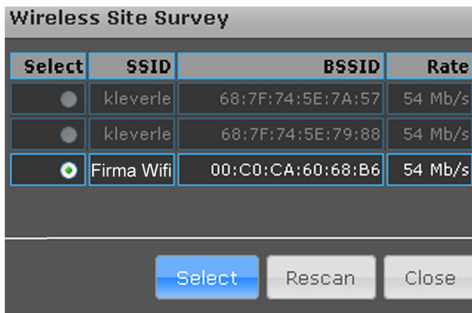
Integrate a S5-LAN++ in a available WLAN with an ALF



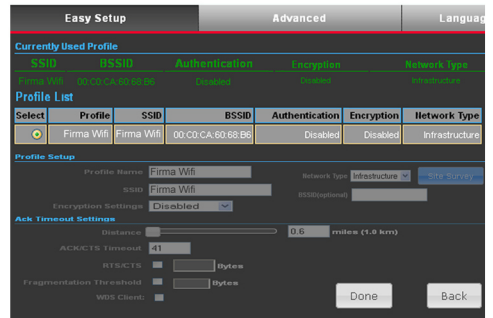
- 1 Connect the 24V power source and the computer to configure



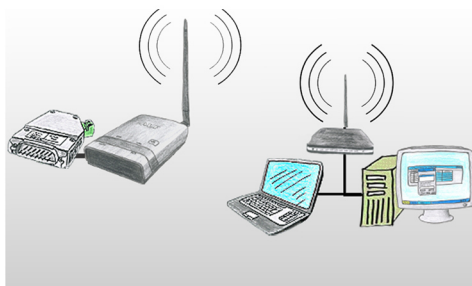
- 2 Select „Client Bridge“ on menu „Easy Setup“



- 3 Press „Site Survey“ to search every WLAN and select your WLAN



- 4 Select your WLAN and enter your password. Press „Done“ to confirm

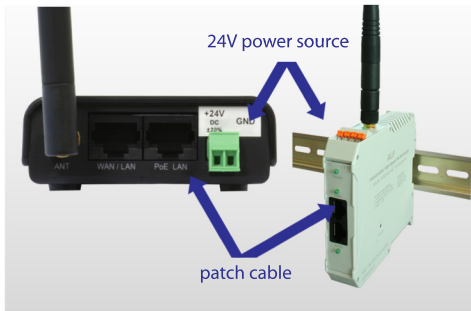


- 5 Connect the S5-LAN++ with a patch cable
Every network has to be in the same IP area
Your Module is now integrated

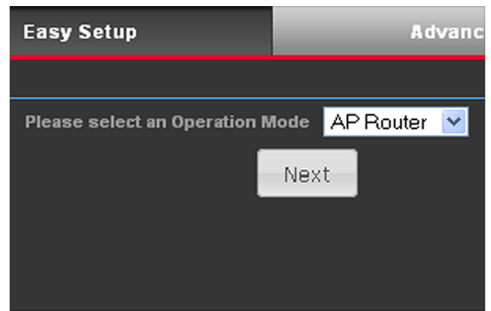


- 6 Installation:
- S5-Patch for original Step5
- PLCVCOM (virtual COM-Port)
Tools available on www.tpa-partner.de

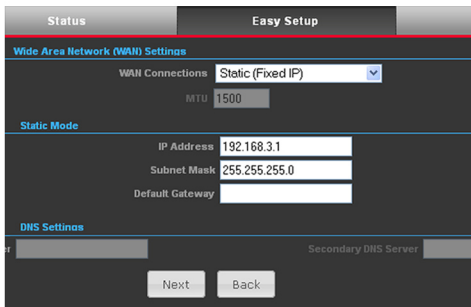
Using S5-LAN++ with an ALF as a WLAN Router



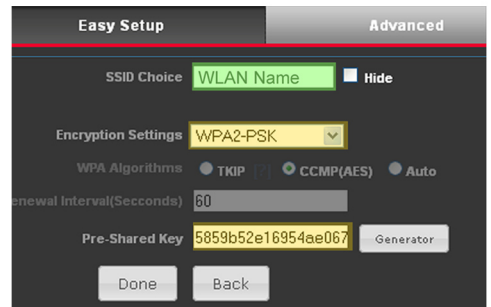
- 1 Connect the 24V power source and the computer to configure



- 2 Select „AP-Router“ on menu „Easy Setup“



- 3 Configure your IP address and subnet mask



- 4 Now configure your networkname and encryption
Our recommended encryption is WPA2



- 5 Connect the S5-LAN++ with a patch cable
Your S5-LAN++ will get an IP from the DHCP server and is now available from every WLAN participants



- 6 Installation:
 - S5-Patch for original Step5
 - PLCVCOM (virtual COM-Port)Tools available on www.tpa-partner.de

Menutree Website:

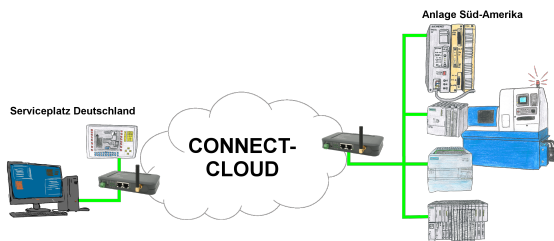
- + Products / docu / downloads
- + Hardware
 - + Programming devices
 - + Programming adapter S7
 - + WLAN/WIFI
 - + Profinet PLCs / Ethernet-CPs
 - + ALF-Devices
 - + ALF

QR-Code Website:



Please make sure to update your drivers before using our products.

Worldwide remote-access thanks to our own cloud



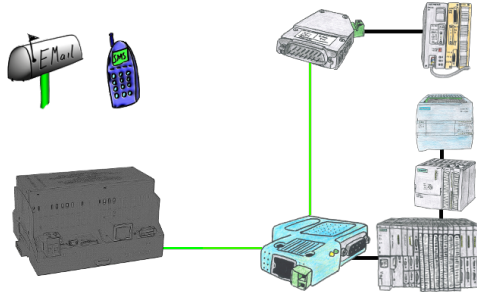
Worldwide remote-maintenance without additional costs thanks to our own cloud

Your devices connect to your own cloud, no matter where they are in the world. Only your devices are in your own private cloud, no one else has access to the cloud. In addition, you can provide each device with its own connection-password, so that the individual systems are protected despite the private cloud.

No registration on any portals, no hidden additional costs, your devices in your own cloud are always accessible.

This is how remote maintenance/remote access is fun.

Message dispatch from the PLC



Send directly from your PLC news, statuses, alarms as SMS or email.

Detect Profinet burglary



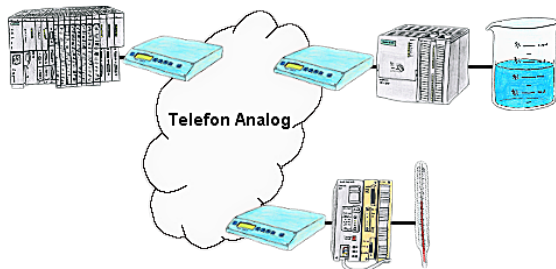
Detection and logging of unauthorized access in the defined Profinet

Attempted break-ins and access to the network are recognized immediately and e.g. reported by email

Logging of all accesses in the network for historical processing

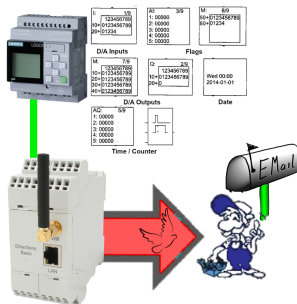
Possible data-storage USB-stick or FTP-server via USB-network-stick.

PLC-coupling (data exchange between PLC-devices)



Your pumping stations report the water levels of the central control via telephone network. The central office itself can of course transmit commands/messages to the substations as well. Thereto no dedicated line is required, a "normal" telephone connection is sufficient because the devices hangs up the line after occurred message.

Send Email with LOGO!



Send of all kinds of eMail-messages controlled by the LOGO!-Control

Detect Profinet burglary



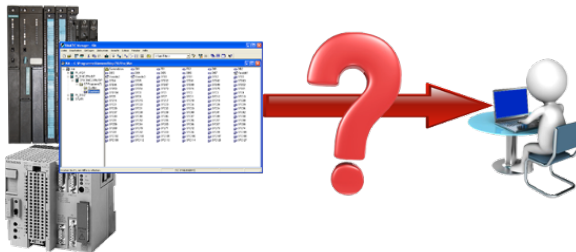
Detection and logging of unauthorized access in the defined Profinet

Attempted break-ins and access to the network are recognized immediately and e.g. reported by email

Logging of all accesses in the network for historical processing

Possible data-storage USB-stick or FTP-server via USB-network-stick.

Automatical backup of your PLC



Guaranteeing security against production-downtimes through regular backups of S5- or S7-PLCs on your PC. S5/S7/H1-backup/restore-software saves all projected controls at a predetermined time. Whether every minute, hourly, daily, weekly or once a month, the PLC is completely read out and saved on the hard-disk/network-drive of the computer.

If the backup-battery fails or the PLC is damaged, you can use this backup-file to restore the PLC.