

**Menutree Website:**

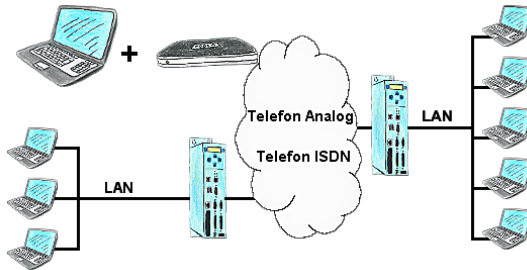
- + Products / docu / downloads
- + Accessories
  - + Connector plug / equipment
  - + MPI- / Profibus connecting cable (for ...)

**QR-Code Website:**



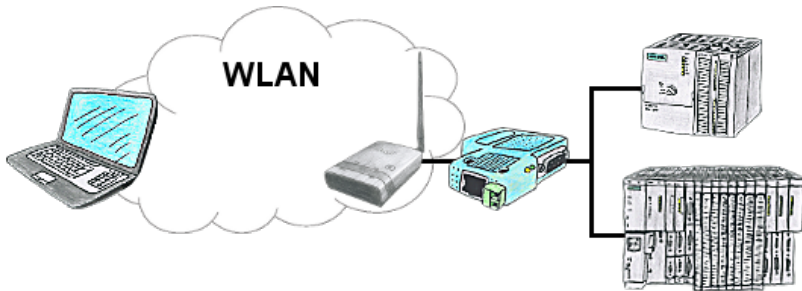
Please make sure to update your drivers before using our products.

Router - Mode (access to the network without router)



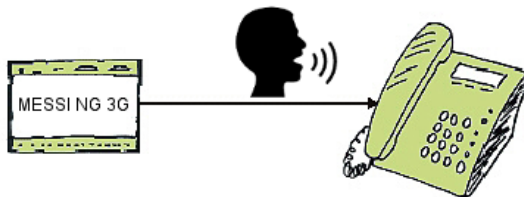
The Tele-Prof-II can also be used as a router for access from a PC via dial-up connection, so that a communication with the behind covered network results. Furthermore a network connection can be made with the TP-II TP-II-line, but in doing so the IP-address-root must differ.

## Operation as an access point



You are on site your plant and should move round the machine and simultaneously control or monitor. No problem, you parametrize ALF as an access-point and connect your S7-LAN or other network-client to him, connect your PC with him and you are online on the PLC.

## Direct Voice-speech-output with MESSI NG 3G



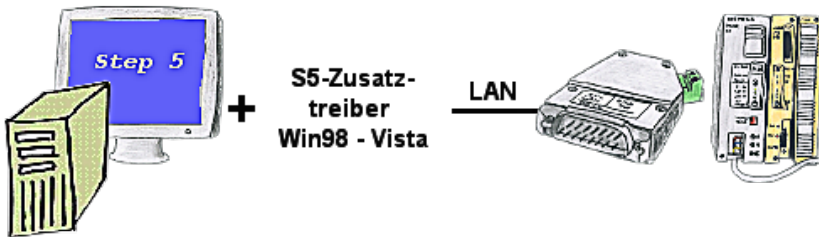
Transmission of fault messages as a voice message to several participants

MESSI NG 3G can send stored-voice-messages to specific recipients depending on the defined input and signal status. To do this, the specified phone-numbers are called according to the phone-number-plan and then the digitized voice-message is transmitted.

Depending on whether the message has been acknowledged or not, the next participant in the numbering-plan will be informed.

Let yourself for example, giving water-levels over the phone, MESSI NG 3G will do this for you.

## Communication with Win98 – XP/Vista/7/8/10/11 via network to S5-PLC



You still have a PC with Win98 and a MS-DOS-based Step5-package and would like to go Online on your S5-PLC via LAN? No problem, the provided virtual Com-Port PLCVCom emulates a COM-port on your PC with which you go Online. Even your MS-DOS-based Step5-software on this WIN98-PC can use this virtual Com-Port. With a patchtool for the Siemens Step5-software, which is provided as well, nothing else stands in your way to communicate via LAN.

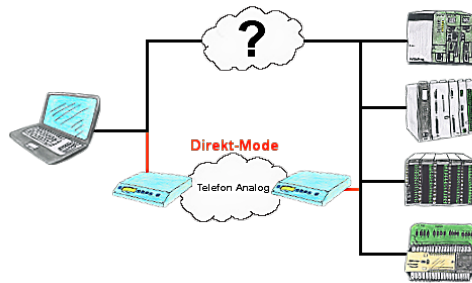
## Operation/control via integrated web-server



Observe the collected energy-information (voltages, power, currents, phase-angles, ...) on the integrated web-server of \_MONI\_ "cable-less" with your mobile-phone or tablet. Change the parameterization of \_MONI\_, operate and control \_MONI\_ easily via the web interface.

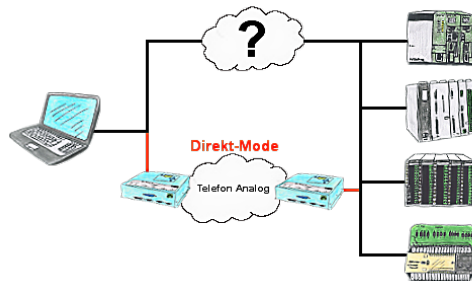
Of course you can also operate wired, where you put \_MONI\_ in your network. Parallel operation of LAN and Wifi is also possible.

## Direct-mode „extended serial interface“



There is an unsupported control or data logger or converter integrated in your installation which protocol is not supported? No problem, the signs that the PC in the office sends will be transferred via telephone line by the Direct-mode , and on-site reproduced by the TP/TB. The way back is identical. So in that case there's also a communication to the electronic devices available.

## Direct-mode „extended serial interface“



There is an unsupported control or data logger or converter integrated in your installation which protocol is not supported? No problem, the signs that the PC in the office sends will be transferred via telephone line by the Direct-mode , and on-site reproduced by the TP/TB. The way back is identical. So in that case there's also a communication to the electronic devices available.