

Menutree Website:

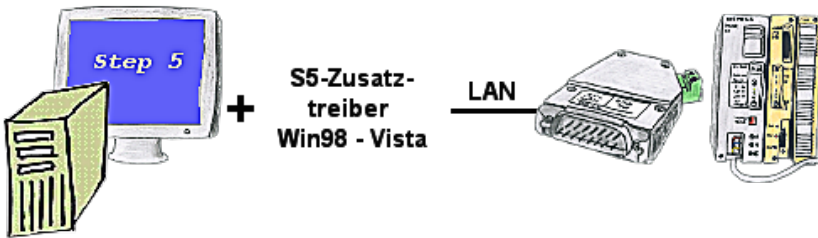
- + Products / docu / downloads
- + Accessories
 - + Various PLC-/Panel-connection-cable
 - + iBx-PLC cable

QR-Code Website:



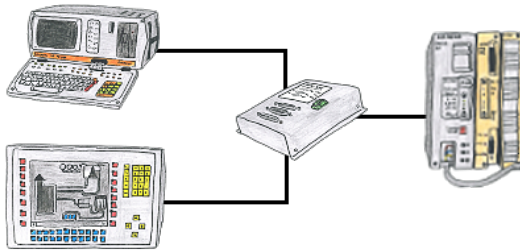
Please make sure to update your drivers before using our products.

Communication with Win98 – XP/Vista/7/8/10/11 via network to S5-PLC



You still have a PC with Win98 and a MS-DOS-based Step5-package and would like to go Online on your S5-PLC via LAN? No problem, the provided virtual Com-Port PLCVCom emulates a COM-port on your PC with which you go Online. Even your MS-DOS-based Step5-software on this WIN98-PC can use this virtual Com-Port. With a patchtool for the Siemens Step5-software, which is provided as well, nothing else stands in your way to communicate via LAN.

PD-interface of the S5-PLC already occupied (OEM-device)



Your PD-interface of the S5-PLC is already occupied with a panel and you should accomplish program modifications without removing the panel? No problem, connect the Multiplexer one-time to the PLC and then connect the panel and also your PC to the Multiplexer. Now you can work parallel with the PLC without the need of affecting the operation of the panel.

Detect and alarm Profinet burglary



Recognize cable breakage, contact problems and line faults.
Retransmissions and failures are logged and reported.
Early acting before total failure of the participant.

Detect Profinet burglary



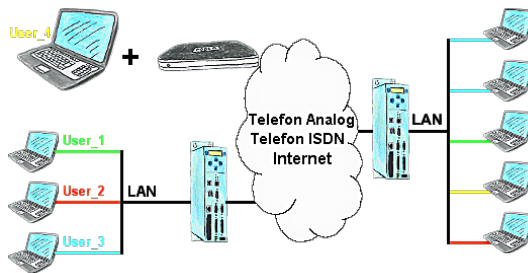
Detection and logging of unauthorized access in the defined Profinet

Attempted break-ins and access to the network are recognized immediately and e.g. reported by email

Logging of all accesses in the network for historical processing

Possible data-storage USB-stick or FTP-server via USB-network-stick.

User dependant network access



You have PLC/LAN-participants different supplier in your network and everybody should have access to this network? No problem, you give every supplier a VPN-username and password, define in the destination device a user-dependent network-access and after positiv login he only can communicate to the released ip-addresses.

S5-PLC over LAN

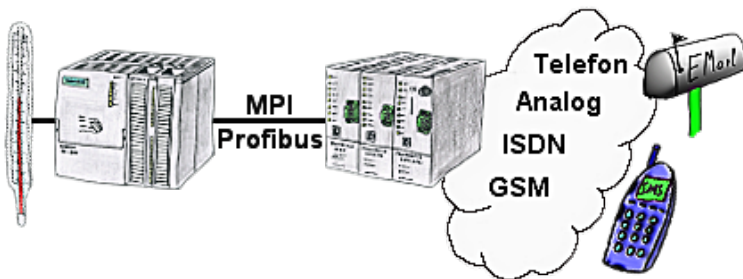


Communication with S5-PLC via Ethernet, just how and with what?

Data-communication with S5-PLC from PC or other devices via network, which interface is required. Questions you don't have to worry about. With "S5 over LAN" you get the right interface-products for your interface of the PLC.

Which one you use then is up to you.

Failure report transmission released by the PLC



Your outstation reports the current value cyclically, or in case of malfunction the status via FAX, as SMS to your mobile phone, to your pager or also via e-mail.