

**Menutree Website:**

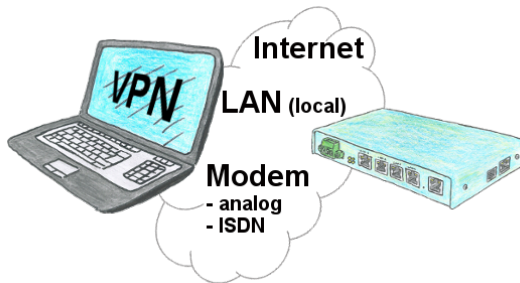
- + Products / docu / downloads
- + Accessories
  - + Antennas / Accessories
  - + Magnetic base antenna

**QR-Code Website:**



Please make sure to update your drivers before using our products.

Secure access through VPN



Secure connection via network or internet or via modem-line with VPN?

The TeleRouter fulfills all of these requirements. It contains an engine for VPN, regardless of whether a server or a client is required. Configuration of the VPN-engine and the device in general via the integrated web-server.

A corresponding VPN-client for Windows can be downloaded free of charge as an installation-script from the download-page.

## Worldwide access



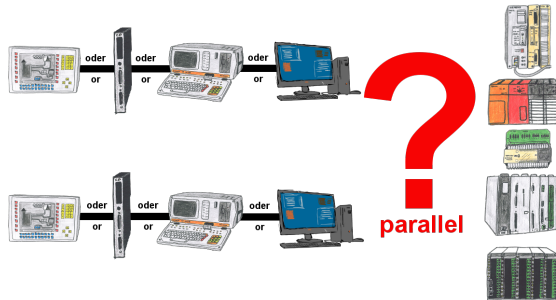
No matter where you are, access to the EtherSens-device and its web-interface is available from everywhere.

## Profinet-monitoring/-diagnosis inclusive alarm-messages



Detect intrusions and anomalies on your ProfiNet.  
Early detection of malfunction and failures and malfunctions.  
Easy installation, plug and play double socket.

Occupied programming interface => does not have to be

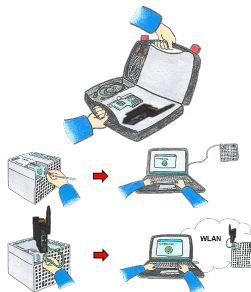


Your Programming-interface of the PLC is already occupied with a panel or PC or communication-processor?

You should accomplish program modifications without removing the other communication-partner? You connect the PLC-specific Multiplexer one-time to the PLC and then connect the communication-partner and also your PC. Now you can work parallel with the PLC without the need of affecting the operation/communication of the panel/CP.

You can even work with 2 programming devices simultaneously, 2x open the same block, only changes which are stored at last will be finally stored in the PLC. Also ideal for trainings purposes if PLC's with IO's are scare goods.

Multiplexer-devices of the PG-MUX-II-family are the ultimate service-device, regardless of what you plug into the two PG-sockets, both participants communicate parallel with the controller.



Communication with S5/S7-PLC (mainly), whether wired or via WIFI?

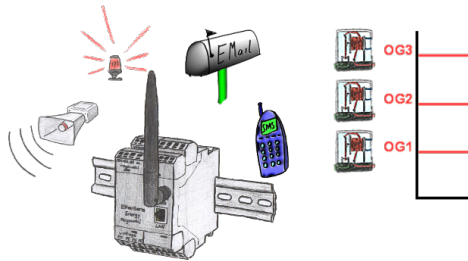
Universally armed for all requirements with the WIFI-sets, regardless of whether it is an S7-PLC, S5-PLC or a controller from another manufacturer with a LAN connection, having everything with you, depending on the used set, is your advantage.

- \* S5-LAN++ or S5-BRIDGE for S5-PLC
- \* S7-LAN or S7-BRIDGE for S7-PLC (PPI/MPI/Profibus)
- \* ALF-UA as a pure converter from Ethernet to WIFI
- \* Patch-cable or Cross-cable in order to act also wired

With the WIFI-Set you simply have everything with you in a handy case, be prepared for everything.

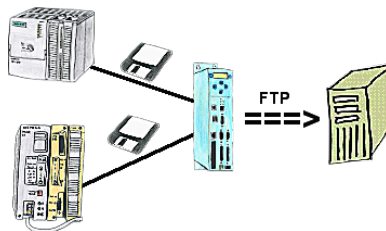
This makes (on site) work a pleasure.

## Alarming



Dont log with EtherSens-device only the process-values, also monitor them simultaneously. Once a predetermined threshold is exceeded/not reached, the EtherSens-device indicates this.

## Data logger with FTP-interface



You need a data logger which tape-records the specified data of the PLC and you can collect the data via FTP on demand. No problem, TP-II with the option Datalogger is the solution for you.