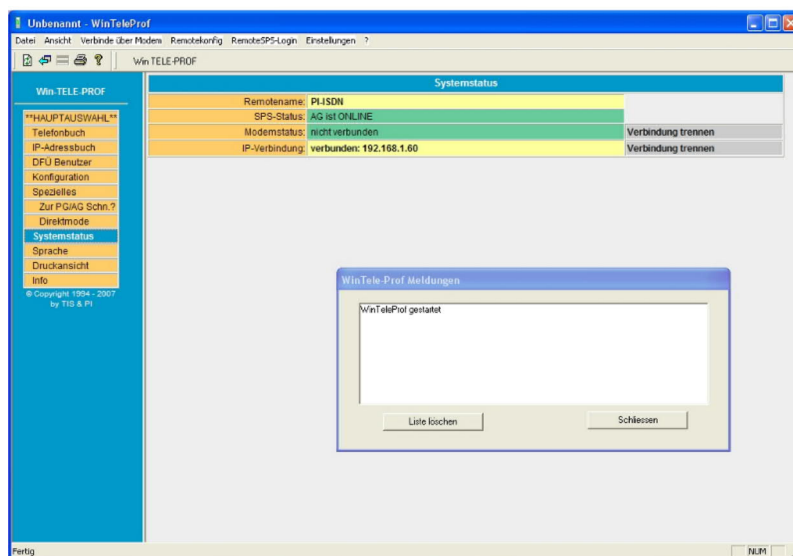


# Win-TELE-PROF user manual

(english)



Art.Nr. 9371-PC-S5  
Art.Nr. 9371-PC-S5-F  
Art.Nr. 9371-PC-S5-S  
Art.Nr. 9372-PC-S5  
Art.Nr. 9372-PC-S5-F  
Art.Nr. 9372-PC-S5-S  
Art.Nr. 9371-PC-S5-X  
Art.Nr. 9371-PC-S5-F-X  
Art.Nr. 9371-PC-S5-X-S  
Art.Nr. 9372-PC-S5-X  
Art.Nr. 9372-PC-S5-F-X  
Art.Nr. 9372-PC-S5-X-S  
Art.Nr. 9371-PC  
Art.Nr. 9371-PC-F  
Art.Nr. 9371-PC-S  
Art.Nr. 9372-PC  
Art.Nr. 9372-PC-F  
Art.Nr. 9372-PC-S  
Art.Nr. 9371-PC-X  
Art.Nr. 9371-PC-F-X  
Art.Nr. 9371-PC-X-S

Art.Nr. 9372-PC-X  
Art.Nr. 9372-PC-F-X  
Art.Nr. 9372-PC-X-S

11.02.2021

© PI 2021

# index of contents

## Win-TELE-PROF

### **1 Win-TeleProf as replacement for PG-TELE**

- 1.1 What is Win-TeleProf?
- 1.2 Supported PLC-Controls
- 1.3 Requirements
- 1.4 Installation
- 1.5 Communication establishment

# Win-TELE-PROF

## 1 Win-TeleProf as replacement for PG-TELE

### 1.1 What is Win-TeleProf?

Win-TeleProf is a Software, which simulates the PG-TELE in the remote-maintenance via telephone. Thereby the remote-maintenance can be realized with only one TELE-Network-device. Though you will need an additional external 56k Modem and the Win-TeleProf Software on your local PC.

### 1.2 Supported PLC-Controls

- Simatic S5
- Simatic S7-300/400
- Pilz PSS

Concerning of the different PLC-controls there are no distinction to do in the configuration. The software automatically adjust himself for each PLC-type. Please note, that there is a own virtual COM-Port for S5+Pilz as well as for S7 and Direkt-Mode.



*For the remote-maintenance the carrier frequency must be constant. Some notebook soft modems neglect that, because they mainly are designed for surfing the internet, where the frequency is given by the provider. Our advice is to use an external modem instead.*

### 1.3 Requirements

Hardware:

- 1x TELE-Network-device
- 1x 56k Modem external

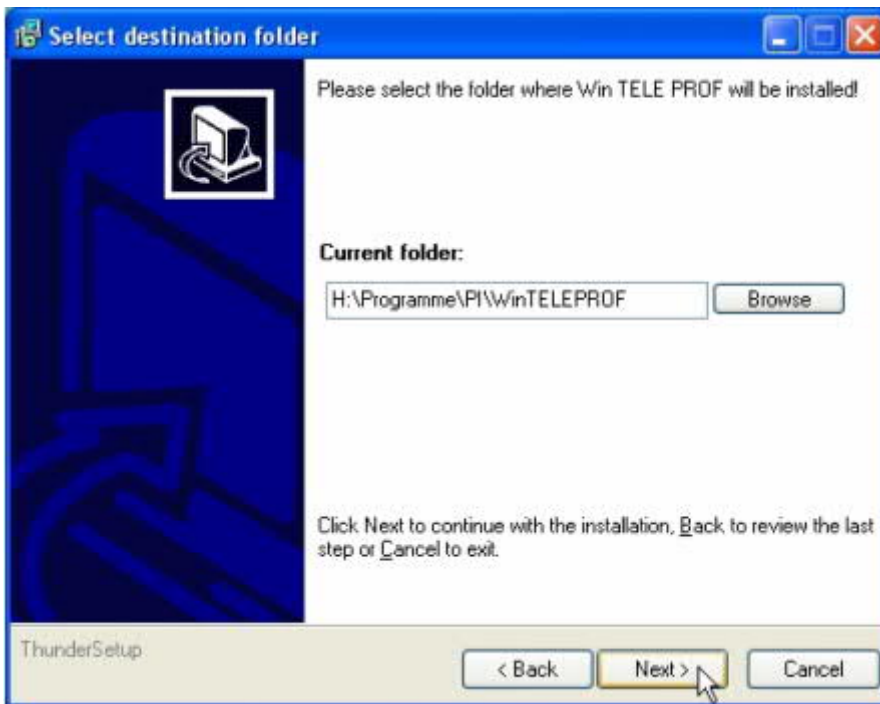
Software:

- 1x Win-TeleProf

### 1.4 Installation

1. Please download from the you known web-site the "Win-TELEPROF-software" and save the file on your PC.

2. Run the file and follow the instructions.

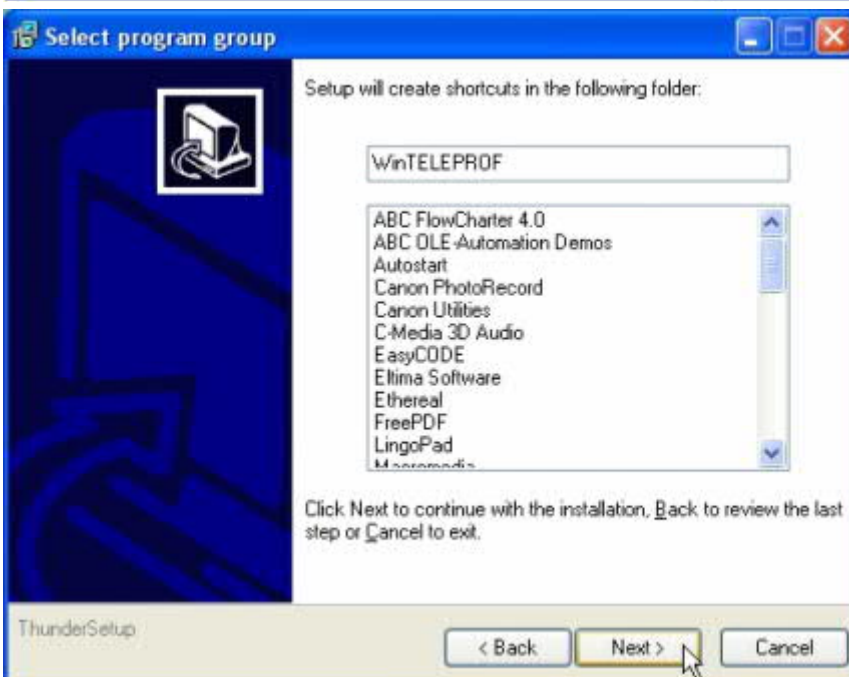


3. After choosing language the welcome dialog appears in the chosen language.

Click „Next“ to define the installation path.

This can be done by clicking „Browse“.

If you are ready press „Next“ to continue.

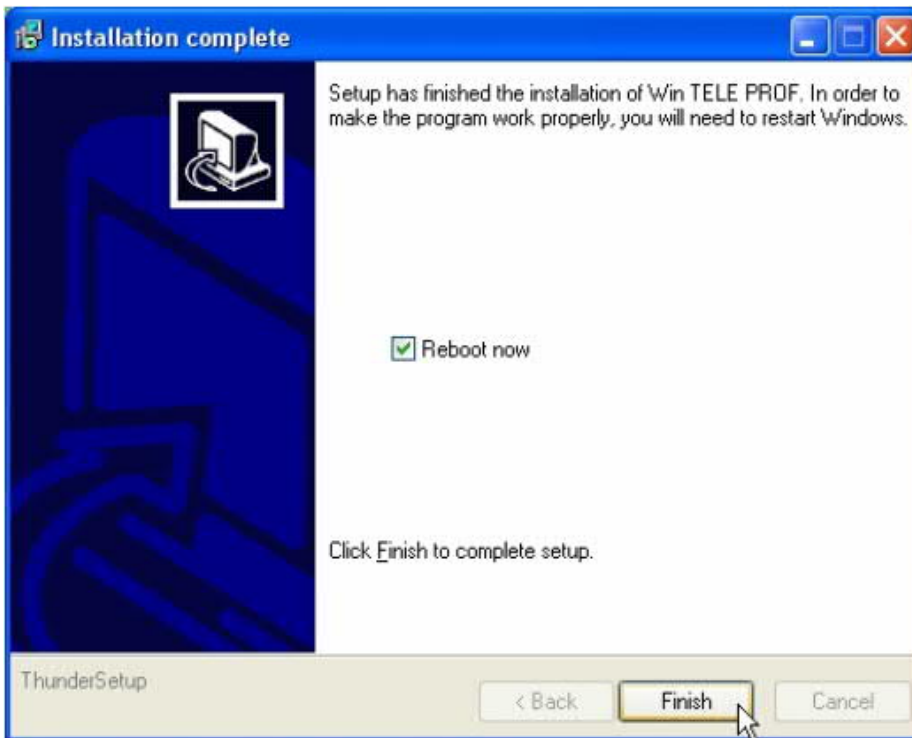


4. In the next dialog you can choose the program folder for your start menu.

Continue with „Next“.

5. In the following dialog choose the kind of installation and click „Next“ to continue.

Now indicate your name and the name of your company and confirm by clicking „Next“.



6. Now a short summary in which you can review your entries.

7. Wait until the installation was completed.

8. Finish the installation after copy the files by pushing on „Exit“.

9. The PC have to get restarted after the installation is complete. Therefore let the checkbox "Reboot now" checked.

## 1.5 Communication establishment

1. When starting the software for the first time the Settings-dialog will appear. Here you can define the virtual COM Ports. This dialog can be opened any time by clicking „Settings“.

### S7 COM:

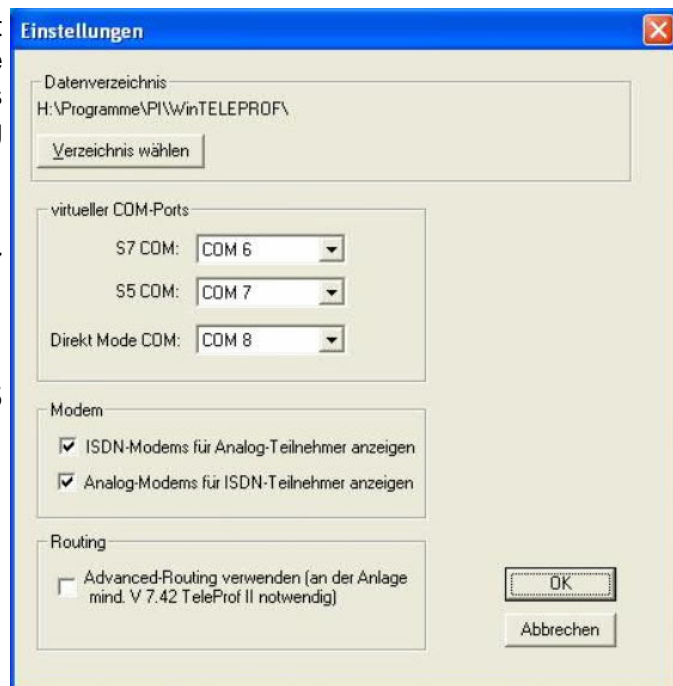
Via this COM Port you can access the S7 which is connected to your PLC-TELE

### S5 COM:

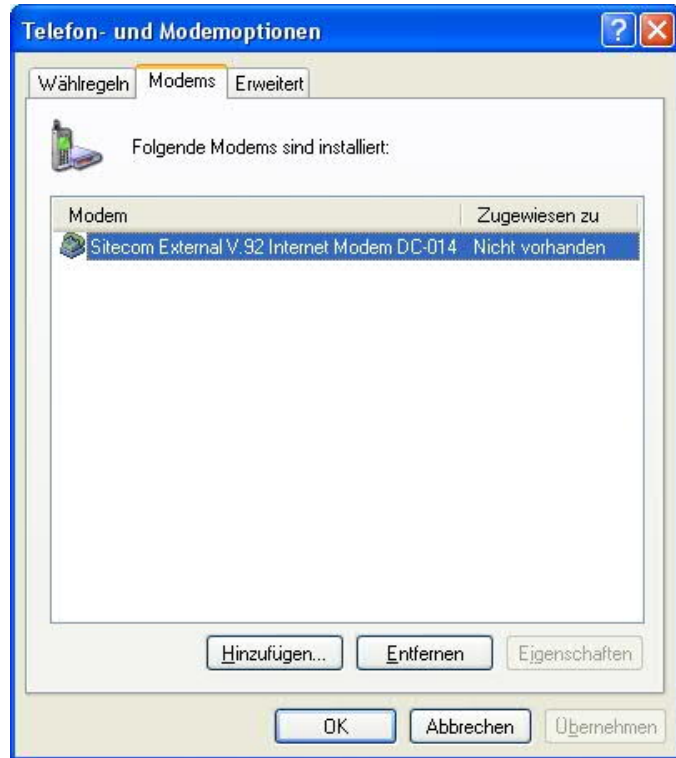
Via this COM Port you can access the S5 which is connected to your PLC-TELE

### Direct Mode COM:

This COM Port is for serial extension, which means that no protocol-insepection will taken place. Consequently you can connect to any desired serial device.



2. Configure your modem under Start => Settings => System configuration => Phone and Modemoptions



3. When you have configured your modem click „Phone book“



4. By clicking the symbol next to the entry number you can edit the corresponding entry respectively create a new entry. By clicking the cross the corresponding entry will be deleted.



5. Create a new entry in which you have defined the number of your Tele-Professional II and then click on the Floppy-Disc-Symbol to store the entry.



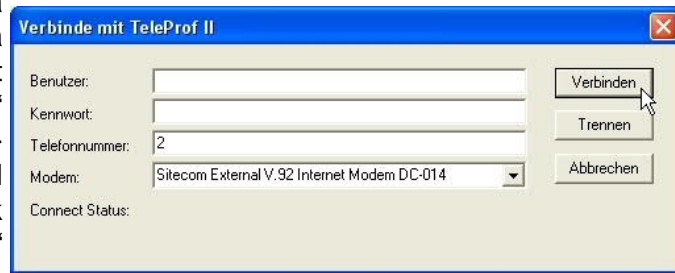
6. Click on the phone-number and enter the login data you have configured in the menu item „Access Codes“.



Check if you have chosen the correct modem and click „Connect“ to trigger a phone-call.

You will be able with the buttons

„EXPORT“ and „IMPORT“ to export the telephone-book and import it in a TeleProf-II device. This device must have a minium firmware-stand of V7.54. For a export you have to click with the right mouse button on the button „EXPORT“ and select „save as“. Now the phone-book-file would be saved on your specified folder. The import is reversed, you click with the mouse on the button „IMPORT“ and select the phone-book-file and after clicking on the OK-button the phone-book was imported.



7. If the connection establishment was successful, the mainscreen will appear again. If you have configured a PIN for the local PLC in your Tele-Professional-II under „Access Codes“ then click „RemoteSPS-Login“ und geben den PIN ein.



8. If this Message appears, you have logged in to your PLC successfully.

