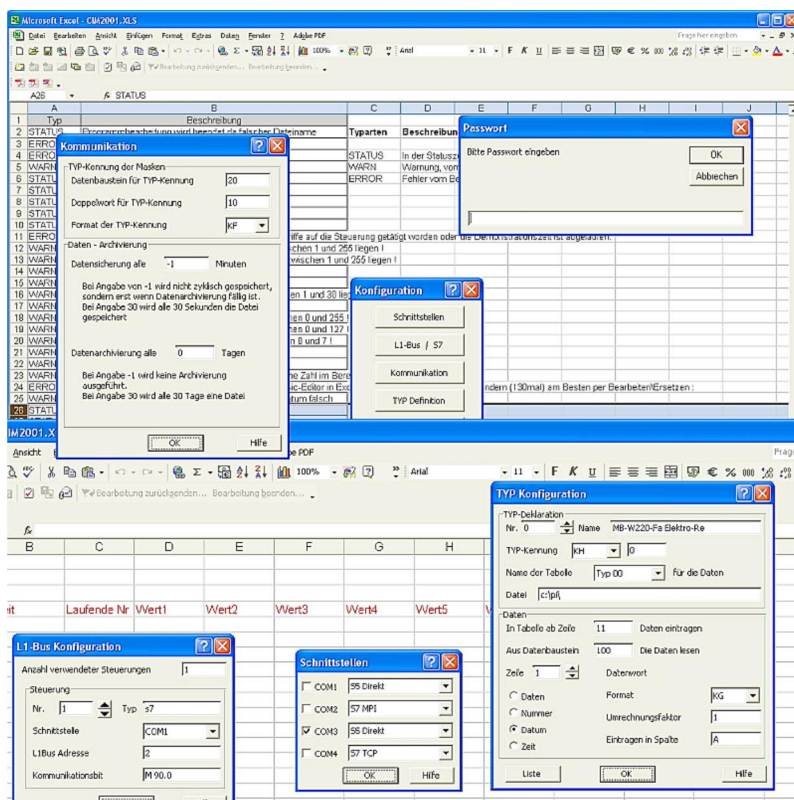


CIM - 2001 user manual

(english)



Art.Nr. 9820
Art.Nr. 9820-F
Art.Nr. 9820-B-F
Art.Nr. 9820-B
Art.Nr. 9821
Art.Nr. 9821-F
Art.Nr. 9822-F
Art.Nr. 9822

11.02.2021

© PI 2021

index of contents

CIM - 2001

1 Installation

1.1 Program

2 Configuration

2.1 COM-unlocks

2.2 Communication

2.3 L1-bus configuration

2.4 TYPE declaration 0-99

2.5 Recording data

3 Troubleshooting

3.1 Error message

CIM - 2001

1 Installation

1.1 Program

Create a subdirectory with the Explorer /file manager or DOS-Box.

For example "C:\PI\".

Copy this disk / data completely in this directory with the file manager / Explorer or DOS-Box.

Open the file "CIM2001.XLS" with Excel. There might be a run-time error about not finding the data "PCS5LW32.DLL" or "PCS5LNKW.DLL". You have to enter the appropriate path correctly in the worksheet "Programm"("Program").

Via the function „Bearbeiten/Suchen“("Edit/Search") search the string "SPSInit" from the beginning of the file. Then change with „Bearbeiten/Ersetzen“("Edit/Replace") the directory specification "A:\\" in your created new directory.

2 Configuration

The configuration is registered in the table "Konfiguration".

2.1 COM-unlocks

IRQ and the address are specified by the Windows-95 system and can not be changed. The column ON/OFF is designed to enable the serial ports = "ON" or disable = "OFF". The next column indicates if the PLC is connected "directly" or via a "L1-BUS" (the latter is only possible in the PG-BUS version!)

2.2 Communication

In this table is the type double-word registered this is saved for each type in the same data block „Typ-Doppelwort DB“("type double-word DB") and double data word „Typ Doppelwort DD“("type double-word DD") . Default is the data block 10, double word DD 0.

The next two lines are necessary to control the archiving. Depending on your settings for the archives in the next two lines the archives will be proceeded.

Data archiving in days	Backup minute	every	Description
Empty or -1	Empty or -1		No data backup or archiving
Empty or -1	15		Data backup every 15 minutes
0	Empty or -1		Data backup every day
30	Empty or -1		Data backup of the last 30 days
30	5		Data backup of the last 30 days and backup every 5 minutes

While the data archiving is running, the already saved line will be erased from the table.

2.3 L1-bus configuration

Via the input „Anzahl der Steuerungen“("number of controllers"), the number of connected controllers are defined.

Via "iBx Adr" you enter the PLC number of the controller in the range of 1-30.

In the column "COM" you enter the COM-no., which is connected to this PLC.

In the column „Kommunikationsbit“("communication bits") is defined which bit takes "1" if data are available.

This bit will be reset to "0" if the data transfer was successful.

2.4 TYPE declaration 0-99

In the column "Typ-DD"("type-DD") you type in the format "KH", of the type-double word, as well as the type in the corresponding format.

In the column "Filename"("filename") can be entered a path or a path with a filename. If no filename is entered it creates automatically a filename "Pyymmdd.XLS" whereby yy = year 2 digit , mm = month number with two digits and dd = day 2 digits. If the last character is "/" furthermore will be added a subdirectory with the year 4-digit.

Entry in configuration mask	Filename to be used for backup
C:\PI\SIC.XLS	C:\PI\SIC.XLS
C:\PI\	C:\PI\P980723.XLS (if today is the 23rd of July 1998)
C:\PI/	C:\PI\1998\P980723.XLS (if today is the 23rd of July 1998)

In the column „Sheet/Tabellenname“("sheet / table name") you have to enter the used table name.

In the column „Speichern ab Zeile“("save from the line") is defined from which line on the collected data are saved.

In the column „Datenbaustein“("data blocks") is defined the data block which should be used.

The type declarations are entered in the grid of 10x10.

2.5 Recording data

Within the data type declaration those data which should be collected will be defined here. You can define a maximum of 31 lines/ parameters.

In the column „Datenwort“("data word") is defined which column should be signed as data word or which data should be registered.

Entry	Description
number	enter current number
date	enter current date
time	enter the actual time
10 or other decimal number from 0-255	enter data word 10

Within the „Format“("format") specified line will the data format defined:

Entry	Description
KH	hexadecimal
KF	decimal number
KZ	counter word
KT	time
KG	Floating-point number

Within the „Faktor“("factor") specified line will the factor defined which is used in the format "KH", "KF" and "KG".

In the „Ziel: Spalte“("destination column") is entered the specified destination column.

3 Troubleshooting

3.1 Error message

In the table „Fehlermeldungen“("error messages") are the program messages entered with an indication of how they should displayed.

In the column „Typ“("type") is defined how it is displayed. Those are the following settings:

Type	Description
STATUS	In the status bar display, no termination
WARN	Warning, must be confirmed by the user
ERROR	Fatal error, inform the user and close the program

The executable program must be named "CIM2001.XLS" Otherwise, if you want to open your workbook the program will not run.