

**Menutree Website:**

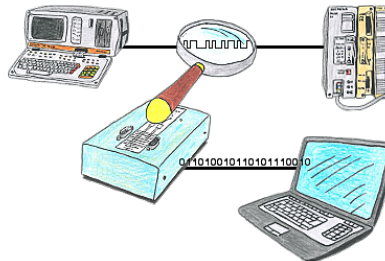
- + Products / docu / downloads
- + Accessories
  - + Connector plug / equipment
  - + CheapConn-plug with 24V-cable-out

**QR-Code Website:**



Please make sure to update your drivers before using our products.

Logging and analysis of communication data



You want check, why your application cant communicate with the PLC or why after some time past the communication will be broken? No problem, integrate the PG-FOX-hardware in this communication way and log through the PG-FOX-software on an PC the sended data in the exact time. So, you can later check the date and find a solution of the problem.

## S7-PLC over LAN



Communication with S7-PLC via Ethernet, just how and with what?

Data-communication with S7-PLC from PC or other devices via network, which interface is required. Questions you don't have to worry about. With "S7 over LAN" you get the right interface-products for PPI, MPI and Profibus.

Which one you use then is up to you.

## S5-PLC over LAN

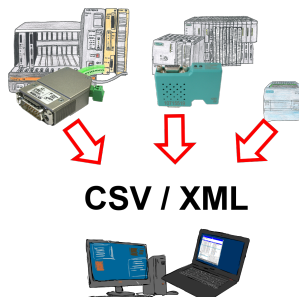


Communication with S5-PLC via Ethernet, just how and with what?

Data-communication with S5-PLC from PC or other devices via network, which interface is required. Questions you don't have to worry about. With "S5 over LAN" you get the right interface-products for your interface of the PLC.

Which one you use then is up to you.

## PLC-data in Excel-readable file



Save your PLC content, production-data in a file on your PC. This file, a CSV- or XML-file (depending on the license), can then be used e.g. further processed with Excel.

A file that includes all configured variables in an infinitely-long list with a suitable time-stamp, either controlled by the PC or via a PLC-trigger (depending on the license). No matter which Siemens-control, as soon as a network-connection is available, nothing stands in the way of recording.

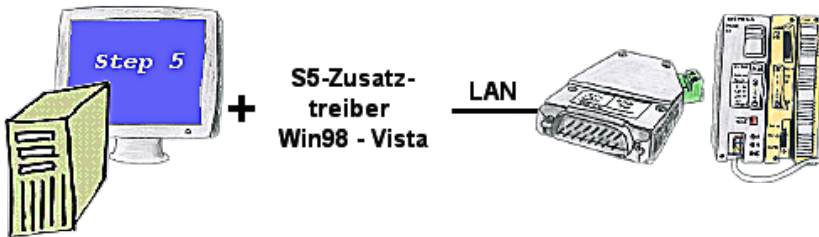
With S7-LAN for PPI, MPI or Profibus or S5-LAN++ for S5-controllers, PLCs without a network-connection can also be addressed and recorded. And depending on the license are several parallel connections possible.

## Variable-chart without Step7-programming package



You would like to give your customer the opportunity to read current numbers of the manufacturing Online, without installing a visualisation or even the STEP7-package? Then a S7-LAN with the option Status Variable" is needed, and your customer can take a look at these password protected data on a site of the integrated webserver.

## Communication with Win98 – XP/Vista/7/8/10/11 via network to S5-PLC



You still have a PC with Win98 and a MS-DOS-based Step5-package and would like to go Online on your S5-PLC via LAN? No problem, the provided virtual Com-Port PLCVCom emulates a COM-port on your PC with which you go Online. Even your MS-DOS-based Step5-software on this WIN98-PC can use this virtual Com-Port. With a patchtool for the Siemens Step5-software, which is provided as well, nothing else stands in your way to communicate via LAN.

## S7-PLC over WLAN/WIFI



Communication with S7-PLC via WLAN/WIFI, just how and with what?

Data-communication with S7-PLC from PC or other devices via WLAN/WIFI, which interface is required. Questions you don't have to worry about. With "S7 over WLAN/WIFI" you get the right interface-products for PPI, MPI and Profibus.

Which one you use then is up to you.