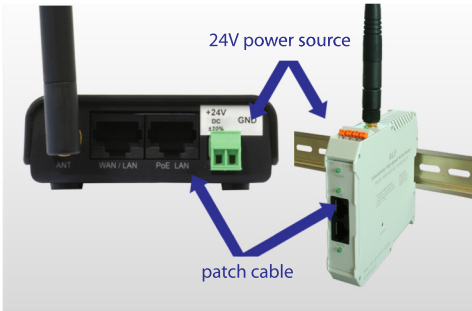
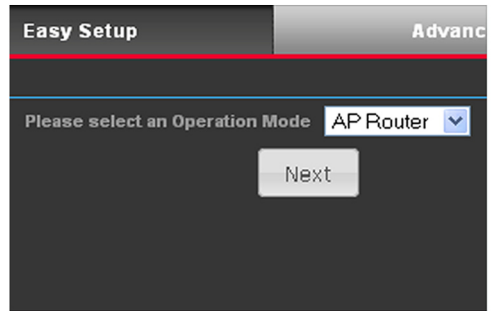


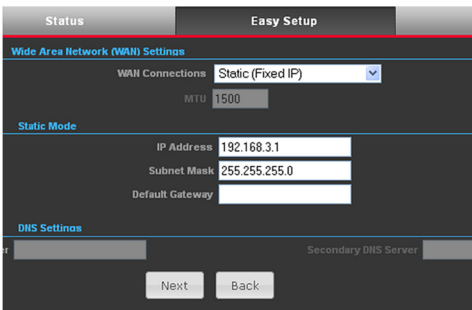
Using S7-LAN with an ALF as a WLAN Router



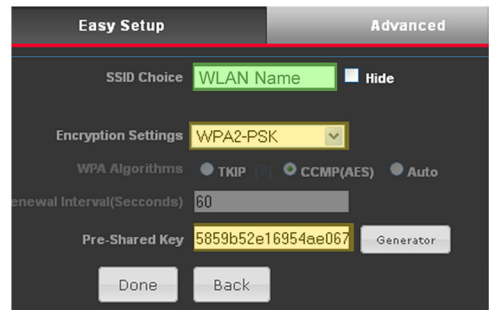
- 1 Connect the 24V power source and the computer to configure



- 2 Select „AP-Router“ on menu „Easy Setup“



- 3 Configure your IP address and subnet mask



- 4 Now configure your networkname and encryption
Our recommended encryption is WPA2

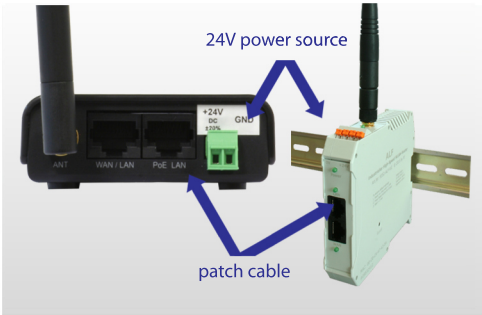


- 5 Connect the S7-LAN with a patch cable
Your S7-LAN is now available from every WLAN participants

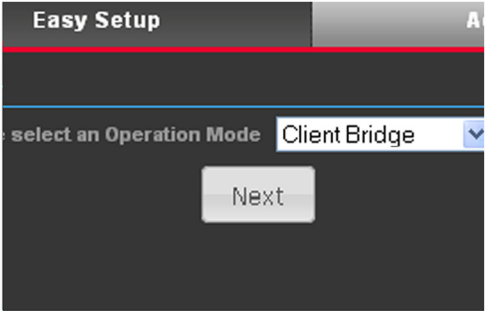


- 6 Installing TIC driver
TIC driver available on www.tpa-partner.de

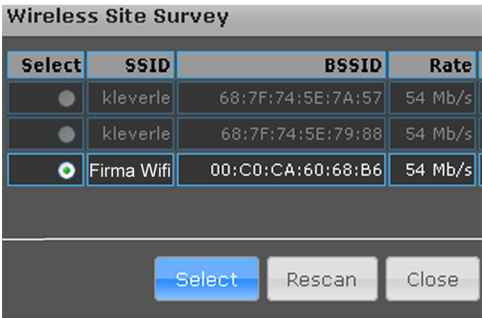
Integrate a S7-LAN in a available WLAN with an ALF



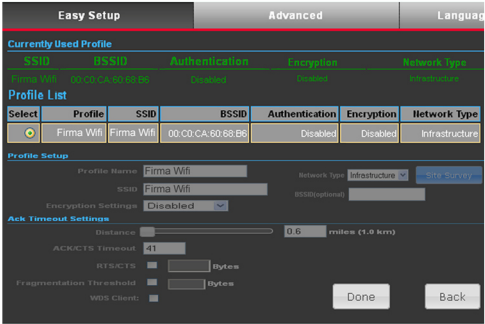
- 1 Connect the 24V power source and the computer to configure



- 2 Select „Client Bridge“ on menu „Easy Setup“



- 3 Press „Site Survey“ to search every WLAN and select your WLAN



- 4 Select your WLAN and enter your password. Press „Done“ to confirm

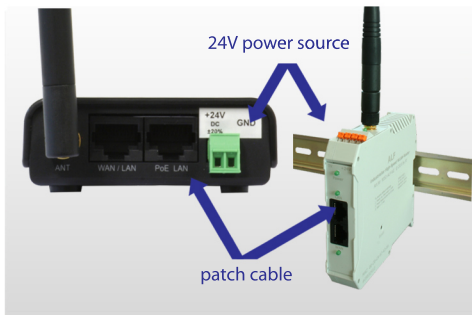


- 5 Connect the S7-LAN with a patch cable
Every network has to be in the same IP area
Your Module is now integrated

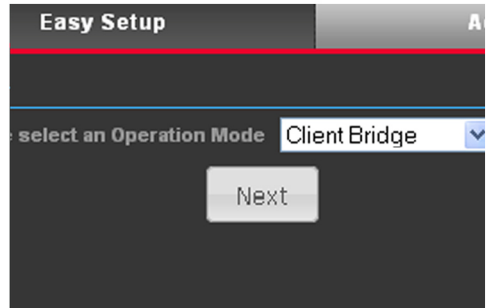


- 6 Installing TIC driver
TIC driver available on www.tpa-partner.de

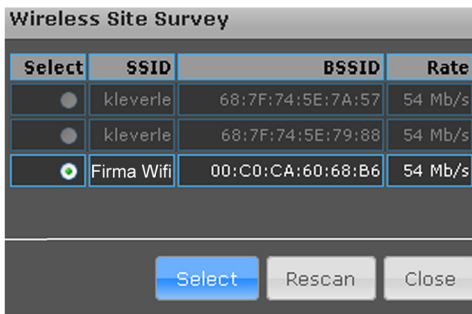
Integrate a S5-LAN++ in a available WLAN with an ALF



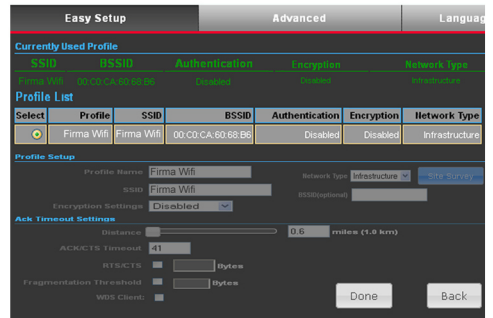
- 1 Connect the 24V power source and the computer to configure



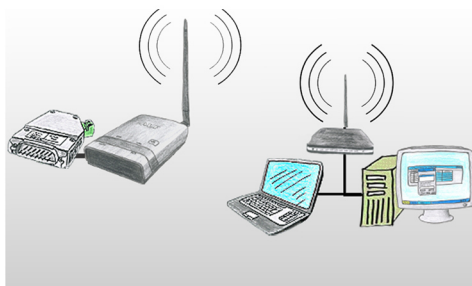
- 2 Select „Client Bridge“ on menu „Easy Setup“



- 3 Press „Site Survey“ to search every WLAN and select your WLAN



- 4 Select your WLAN and enter your password. Press „Done“ to confirm

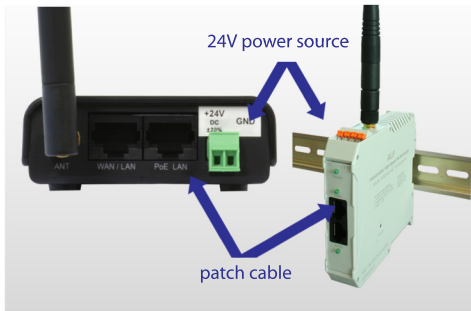


- 5 Connect the S5-LAN++ with a patch cable
Every network has to be in the same IP area
Your Module is now integrated

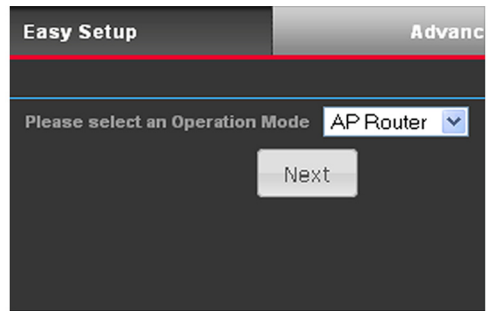


- 6 Installation:
- S5-Patch for original Step5
- PLCVCOM (virtual COM-Port)
Tools available on www.tpa-partner.de

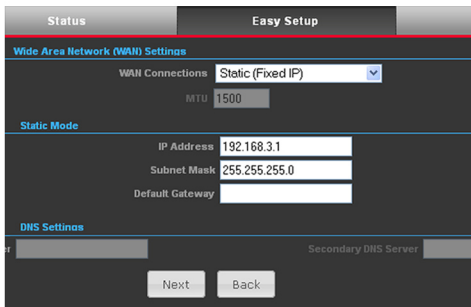
Using S5-LAN++ with an ALF as a WLAN Router



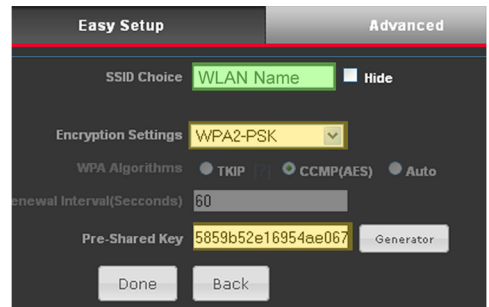
- 1 Connect the 24V power source and the computer to configure



- 2 Select „AP-Router“ on menu „Easy Setup“



- 3 Configure your IP address and subnet mask



- 4 Now configure your networkname and encryption
Our recommended encryption is WPA2



- 5 Connect the S5-LAN++ with a patch cable
Your S5-LAN++ will get an IP from the DHCP server and is now available from every WLAN participants



- 6 Installation:
 - S5-Patch for original Step5
 - PLCVCOM (virtual COM-Port)Tools available on www.tpa-partner.de

Menutree Website:

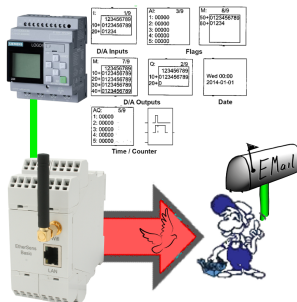
- + Products / docu / downloads
- + Hardware
 - + Programming devices
 - + S7
 - + WLAN/WIFI
 - + Profinet PLCs / Ethernet-CPs
 - + ALF-Devices
 - + ALF

QR-Code Website:



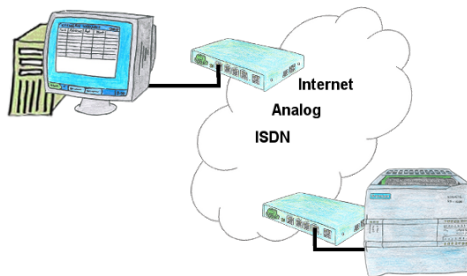
Please make sure to update your drivers before using our products.

Send Email with LOGO!



Send of all kinds of eMail-messages controlled by the LOGO!-Control

Integrated phone-book



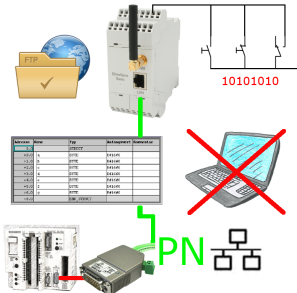
You have to consider several facilities and do not want to keep a watch list with phone numbers? No problem, the TELE-router contains a phone book, so you any time maintain the entire data connection in the router and build to the opposite side by clicking the link in the web browser.

Remote-maintenance Pilz-PLC



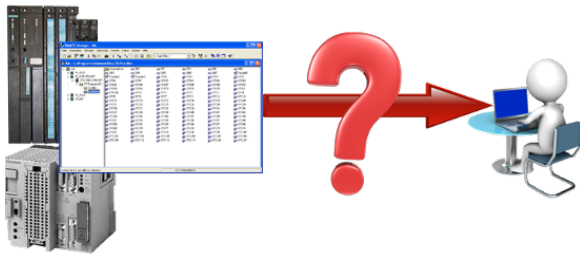
Remote-maintenance of a Pilz-controller with network-connection via secure VPN-tunnel of the TeleRouter

Data backup S5-PLC on FTP-server via dig. IO



Via digital input triggered DB-backup/-restore without additional PC via PG-socket and Ethernet to FTP-server

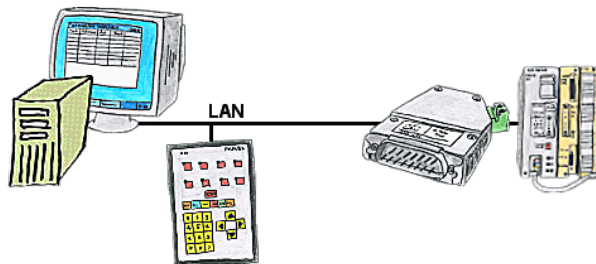
Automatical backup of your PLC



Guaranteeing security against production-downtimes through regular backups of S5- or S7-PLCs on your PC. S5/S7/H1-backup/restore-software saves all projected controls at a predetermined time. Whether every minute, hourly, daily, weekly or once a month, the PLC is completely read out and saved on the hard-disk/network-drive of the computer.

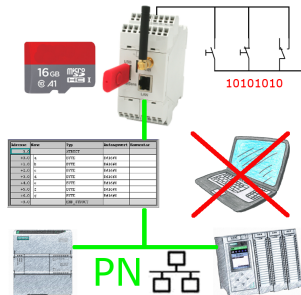
If the backup-battery fails or the PLC is damaged, you can use this backup-file to restore the PLC.

Watching of S5-PLC's via LAN without Ethernet-CP



Your panel only has a LAN-socket as PLC-interface, no problem. Connect this socket with the S5-LAN++ and plug it directly on the PD-interface of the PLC. Then access to the variables and data of the PLC is already available.

Data backup S7-PLC PN-port on SD-card via dig. IO



Via digital input triggered DB-backup/-restore without additional PC via PN-port to SD-card