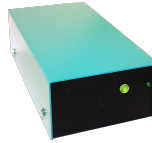


Menutree Website:

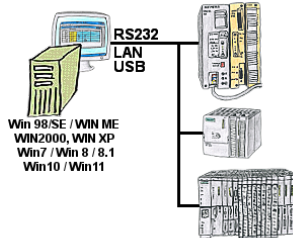
- + Products / docu / downloads
- + Hardware
 - + Memory modules / Prommer
 - + EPROM-ERASER UVL3

QR-Code Website:



Please make sure to update your drivers before using our products.

Programming/controlling of S5/S7[FREEWARE without support]-PLC's



Program change on your systems and no original programming-package?

With PG-2000, a universal programming system for S5 and S7 controllers [S7 FREEWARE without support], you can make changes to the controllers yourself. Connect the PC with the appropriate interface-product via the COM-, USB- or LAN-port.

One surface for S5- and S7-programming [S7 FREEWARE without support] so you don't have to get used to it. Windows as the operating-system, work with every current version of Windows. Where the original programming packages no longer works, work with PG-2000 ONLINE.

Remote-maintenance Siemens-S7-PLC with PN-Port



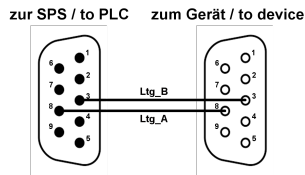
Remote-maintenance of a Siemens-controller with network-connection via secure VPN-tunnel of the TeleRouter

Easy Web-Visualization



You need a web-visualization which is kept simple, with no additional Plugins like ActiveX, Flash(R) or Java(R) and is compatible with most general browser? Then you have found with S7-Visu the solution. Visualizations under Windows(R)/Linux on PC-based systems are just realizable as those for tablets or Phones with browser support. The simultaneous operation of multiple browsers at the same time is possible.

Protection of the bus interface



Participants on "unknown" bus-connection, threatening danger of damage

Programming-adapters or other bus participants to attach a 9-pin bus-connection, who has not a queasy feeling that damages can arise.

Who owns the assemblies "VIPA 21x-2bm0x and 208-1dp0x" from VIPA knows the problem. Quickly, a voltage-conducting pin is pulled against GND => The short circuit is existing.

Simply save only the plug-contacts of the bus-connection from wear due to permanent plugging and removal of participants. For this purpose, the bus-coupler plug can be used.

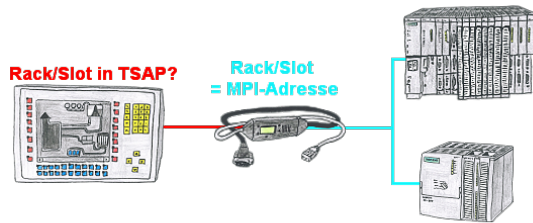
A small component with great effect.

Remote-maintenance Siemens-S7-PLC with PN-Port with firewall



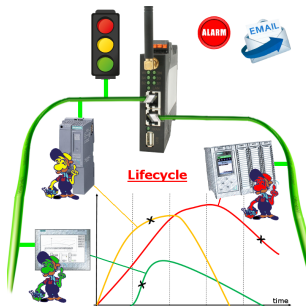
Remote-maintenance of a Siemens-controller with network-connection via secure VPN-tunnel and scalable firewall

Transformation of Rack/Slot in TSAP to MPI-address



Your panel or visualisationsystem addresses the used PLC with Rack/Slot in TSAP? No problem, activate this mode in the MPI-LAN-cable and you will get actual data from the PLC.

Profinet life cycle monitoring



Identify impending failures in your Profinet.
Creeping aging will be displayed to you very detailed.
The Profinet-Watchdog give you the change to react before something happens.