

**Menutree Website:**

- + Products / docu / downloads
- + Accessories
  - + Prolongation-Sets
  - + PG-UNI lengthening set

**QR-Code Website:**



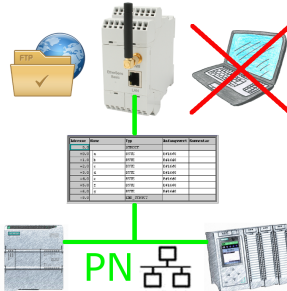
Please make sure to update your drivers before using our products.

Remote-maintenance Pilz-PLC with firewall



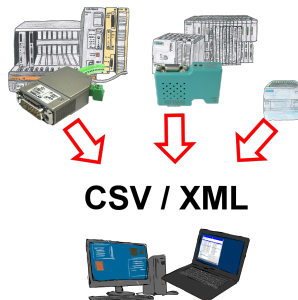
Remote-maintenance of a Pilz-controller with network-connection via secure VPN-tunnel and scalable firewall

## Data backup S7-PLC PN-port on FTP-server



S7-PLC triggered DB-backup/-restore without additional PC via PN-port on FTP-server

## PLC-data in Excel-readable file

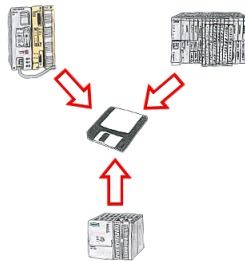


Save your PLC content, production-data in a file on your PC. This file, a CSV- or XML-file (depending on the license), can then be used e.g. further processed with Excel.

A file that includes all configured variables in an infinitely-long list with a suitable time-stamp, either controlled by the PC or via a PLC-trigger (depending on the license). No matter which Siemens-control, as soon as a network-connection is available, nothing stands in the way of recording.

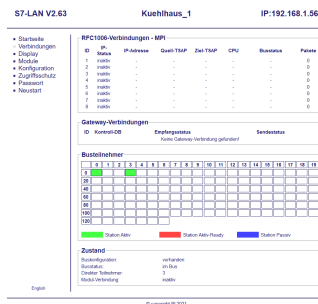
With S7-LAN for PPI, MPI or Profibus or S5-LAN++ for S5-controllers, PLCs without a network-connection can also be addressed and recorded. And depending on the license are several parallel connections possible.

## Backup of formulas without knowledge of PLC



You consistently have to back up formulas which are stored in data blocks or back up production protocols, but the employee in charge has no knowledge of PLC-programming respectively handling PC-programs? No problem, install the PG-2000-software with "option DB-backup" on your PC and connect it with the PLC. The employee only has to click on a symbol on the desktop of the PC and the data blocks of the parameterised PLC will be stored on the fixed disc. Afterwards the program closes itself and the mentioned employee didn't had to accomplish an intervention on the program.

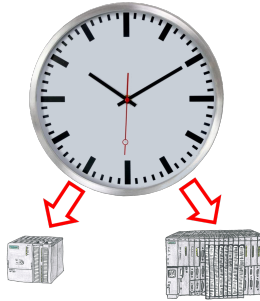
## Informations about the bus



View information from the connected bus-system in plain text without using the Simatic-Manager or TIA-Portal. With the connection-menu you get the list of reachable nodes, marked in color whether it is an "active bus-participant", is a "candidate for inclusion in the bus" or a "passive bus-participant".

You can also see whether cyclic bus-parameter-protocols have been received, you are "in the bus" yourself, the bus-address of the participant recognized as a "direct participant" (on which the S7-LAN is located) and whether the contained modules such as "variable control", "gateway-coupling",... actively communicate.

## Setting the PLC time

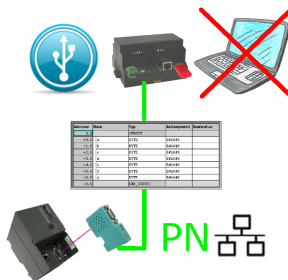


Summer-/winter-time switching, yet this buzzword is one term. Always in March and October the problem of time-change to the PLCs of their plant(s). Capture the controllers in the "S7-PLC exact time synchronization"-tool and automates setting the time in the controllers.

No change on the PLC-program necessary!

Whether MPI/Profibus via S7-LAN or Profinet!

## Data backup S7-PLC over MPI/Profibus on USB-stick



S7-PLC triggered DB-backup/-restore without additional PC via MPI/Profibus on USB-stick