

# Handling-Short Instruction for USB-RS232-Converter-Cable 9359-1-RS232 V1.0



The USB-Serial-Converter-Cable is an interface cable for the 9pin PC-Port. The cable should be connected to the USB-Port (type A-connector).

In the case of the Cable are 2 LED's embedded:

GREEN lights when data is transferred to the PLC  
YELLOW lights when data is transferred from PLC to PC

## Install the cable

First connect the USB-Serial-Converter-Cable into a free USB-Port of your computer. Please download from the below listed web-side the USB-driver for the USB-Serial-Converter-Cable.

Extract the file on your PC and guide the starting hardware-installation-wizard to this folder. The software will install the drivers for the USB-Serial-Converter-Cable automatically.

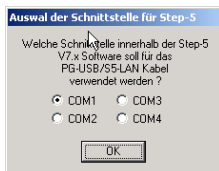
After the driver is installed successfully the COM port is displayed in Control Panel → System → Device manager → COM and LPT → Properties (Right mouse click) → Extended.

**If you changed the COM-Port-Number, restart the PC to activate this COM-Port. After restart choose in the application the selected COM-Port in the configuration.**

## Using the original Siemens S5 software in a DOS window

Do you use the original Siemens S5 patch once. You can download this named web-side and install it on that PC. Go on with choosing the language. „OK“. Press „Install“ and choose the installed. The installation routine is now have to select the used COM port. Then „End“ as soon as the installation is

**Attention:** For the Step5-Original COM4 selected. If necessary change the select “System”. In the Tab “Hardware“, Device-Manager the virtual COM-Port is and LPT“, Right click „USB Serial Port “Properties“. In the following dialog the button „Advanced“, in the next dialog you could choose the COM-Port.



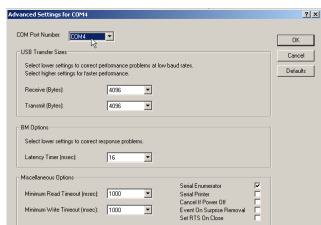
software, then you need to run the S5- "Step5 additional driver" also from the

Select “USB-Serial” and confirm with folder where the S5 software is searching for the S5 software. Next you the S5 patch will be installed. Press completed.

application there **must** be one COM1 to COM port. Go to the Control Center, click button „Device manager“. In the listed in the section “Interfaces (COM (COMx))“, in the Context Menu choose select the tab „Port Settings“. Click onto

## Using S5 Original-Software under Windows 98

A virtual created COM port cannot be used directly from a MSDOS Box (Windows 98). The solution is easy just install the “S5 VCOM for Win98”. In the PG-USB menu expand the tree and select the entry “S5 VCOM for Win98”. Choose the language and enter the path where the software should be installed. Select the name for the start menu and click next to proceed with the installation. After the End of the Installation the PC must be rebooted. S5 VCOM is installed into the Autostart-Directory and is started every time the PC boots. If an error occurs while installation or starting of driver, a message is shown. If correctly installed, on the bottom-right corner of the Screen a new tray icon is displayed.



the software should be installed. Select the name for the start menu and click next to proceed with the installation. After the End of the Installation the PC must be rebooted. S5 VCOM is installed into the Autostart-Directory and is started every time the PC boots. If an error occurs while installation or starting of driver, a message is shown. If correctly installed, on the bottom-right corner of the Screen a new tray icon is displayed.

This Tray-Icon shows, if a USB-Serial-Converter-Cable is connected or not, PC to S5, E=from S5 zu PC)

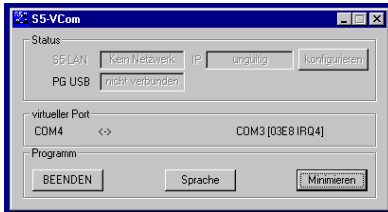


If you double-click displayed:

In the section State is for communication

In the section virtual on the left side is the Windows-Software

Ports) of the MS-DOS Box. This COM-Port should be selected in the S5-Software. According which COM - Ports already exists, the next free COM-Port will be used:



Converter-Cable is connected or not, PC to S5, E=from S5 zu PC)

on the Tray-Icon a new Dialog is

displayed which Interface-Cable is used and if a connection exists.

Port the following information is shown COM - Port which is used from and on the right side the COM-Port (IO-Ports already exists, the next free COM-Port will be used:

#### existing COM

NONE

COM1

COM1,COM2

COM1,COM3

COM1,COM2,COM3

#### from S5VCOM used

COM1 [03F8h,IRQ4]

COM2 [02F8h,IRQ3]

COM3 [03E8h,IRQ4]

COM2 [02F8h,IRQ3]

COM4 [02E8h,IRQ3]

In the section Program you could exit the application, change the language of the application or minimize to the tray-icon.

#### **PG 95 / PG 2000**

Select under Options → Interface the corresponding virtual COM-Port.

#### **S5 for Windows**

In Files → Properties → Interface select the Protocol „S5“ and the virtual COM-Port

More information to Interface-Cables, also the actual handbooks online under

<https://www.tpa-partner.de>

(c) copyright 2000-2024 by TPA

### Menutree Website:

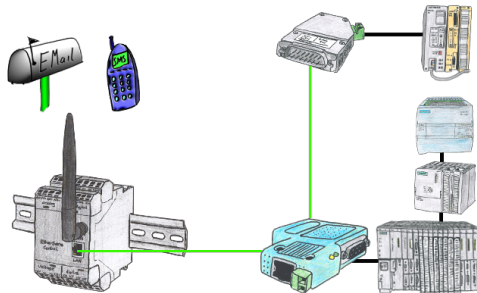
- + Products / docu / downloads
- + Hardware
  - + Converter
  - + USB-serial-converter cable

### QR-Code Website:



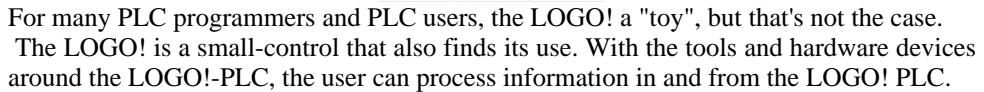
Please make sure to update your drivers before using our products.

### Message dispatch from the PLC



Send directly from your PLC news, statuses, alarms as SMS or email.

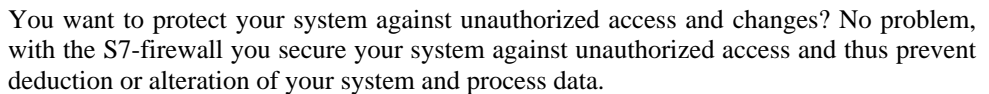
LOGO! - not just a small controller



The LOGO! is a small-control that also finds its use. With the tools and hardware devices around the LOGO!-PLC, the user can process information in and from the LOGO! PLC.

Regardless of whether current-/voltage-values are stored in the LOGO! is to be processed, the LOGO! sent E-mail-messages, here the user will find many products related to LOGO!.

Protection for data-dump and modification
---



You want to protect your system against unauthorized access and changes? No problem, with the S7-firewall you secure your system against unauthorized access and thus prevent deduction or alteration of your system and process data.