

Handling-Short Instruction for PG-USB Cable 9359-1 V1.3

The PG-USB-Kabel is an interface cable for the 15pin PG-Port X4/X5 of a S5 plc. The cable should be connected to the USB-Port (type A-connector). This cable will be active against the plc while the power will be taken from the usb-port of the PC. For some special slot cards for the S5 you can get some special adapters with the several pinning of this card.

This cable can be prolonged with the classic prolongation (pin 2+9 and 6+7 itself drilled) up to 100m 1to1 pin.

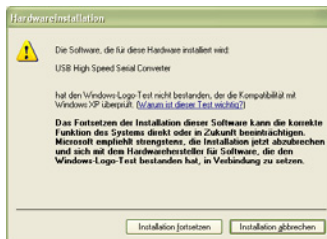
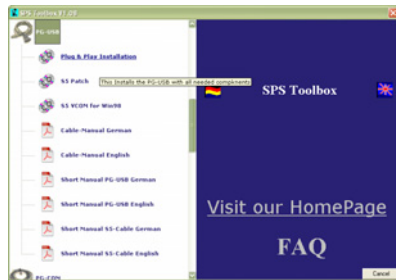
In the Case of the Cable are 2 LED's embedded

GREEN lights when data is transferred to the PLC
YELLOW lights when data is transferred from PLC to PC

Install the cable

First connect the PG-USB cable into a free USB-Port of your computer. Insert the SOFTW_TREIBER_CD into your CD drive and wait until the menu appears (click on mega.exe in the root path of the CD if you have disabled the auto load function).

In the left part of the dialog you will find the menu „PG-USB“. Expand it to get access to different installation possibilities. Click on „Plug And Play Installation“ to install the driver. The installation routine installs the driver immediately or makes a pre installation if you have not plugged in the cable. In this case the installation starts as you plug the cable into a free USB port. While installing Windows XP asks you to continue the installation. Confirm with „Continue Installation“.



After the driver is installed successfully the COM port is displayed in Control Panel → System → Device manager → COM and LPT → Properties (Right mouse click) → Extended.

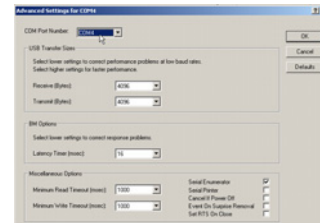
If you changed the COM-Port-Number, restart the PC to activate this COM-Port. After restart choose in the application the selected COM-Port in the configuration.

Using the original Siemens S5 software in a DOS window

After the PG-USB driver installation has been finished you will be asked whether you want to use the original Siemens S5 software. Click „Yes“ if you are using the original Siemens S5 software and go on with choosing the language. Select the PG-USB cable and confirm with „OK“. Press „Install“ and choose the folder where the S5 software is installed. The installation routine is now searching for the S5 software. Next you have to select the used COM port. Then the S5 patch will be installed. Press „End“ as soon as the installation is completed.



Attention: For the Step5-Original application there **must** be one COM1 to COM4 selected. If necessary change the COM port. Go to the Control Center, select “System”. In the Tab “Hardware“, click button „Device manager“.



In the Device-Manager the virtual COM-Port is listed in the section “Interfaces (COM and LPT)”, Right click „USB Serial Port (COMx)“, in the Context Menu choose “Properties”. In the following dialog select the tab „Port Settings“. Click onto the button „Advanced“, in the next dialog you could choose the COM-Port.

Using S5 Original-Software under Windows 98

A virtual created COM port cannot be used directly from a MSDOS Box (Windows 98). The solution is easy just install the “S5 VCOM for Win98”. In the PG-USB menu expand the tree and select the entry “S5 VCOM for Win98”. Choose the language and enter the path where the software should be installed. Select the name for the start menu and click next to proceed with the installation. After the End of the Installation the PC must be rebooted. S5 VCOM is installed into the Autostart-Directory and is started every time the PC boots. If an error occurs while installation or starting of driver, a message is shown. If correctly installed, on the bottom-right corner of the screen a new tray icon is displayed.

This Tray-Icon shows, if a PG-USB-Cable is connected or not, and if a communication is in progress. (S=from PC to S5, E=from S5 zu PC)

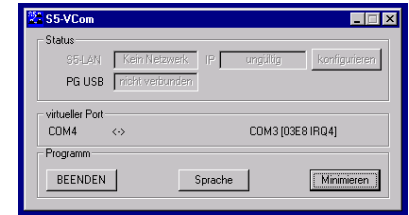


If you double-click on the Tray-Icon a new Dialog is displayed:

In the section State is displayed which Interface-Cable is used for communication and if a connection exists.

In the section virtual Port the following information is shown on the left side is the COM - Port which is used from Windows-Software

and on the right side the COM-Port (IO-Ports) of the MS-DOS Box. This COM-Port should be selected in the S5-Software. According which COM - Ports already exists, the next free COM-Port will be used:



existing COM

NONE
COM1
COM1,COM2
COM1,COM3
COM1,COM2,COM3

from S5VCOM used

COM1 [03F8h,IRQ4]
COM2 [02F8h,IRQ3]
COM3 [03E8h,IRQ4]
COM2 [02F8h,IRQ3]
COM4 [02E8h,IRQ3]

In the section Program you could exit the application, change the language of the application or minimize to the tray-icon.

PG 95 / PG 2000

Select under Options → Interface the corresponding virtual COM-Port.

S5 for Windows

In Files → Properties → Interface select the Protocol „S5“ and the virtual COM-Port

Accessories

AG-150-Adapter for PG-USB-Kabel
CP525-Adapter for PG-USB-Kabel
CP525K-Adapter for PG-USB-Kabel
WF470-Adapter for PG-USB-Kabel
Sinum-Adapter for PG-USB-Kabel
PG-USB Lengthen set

S5-LAN Module (Programming the S5 over Network)

More information to Interface-Cables, also the actual handbooks online under www.tpa-partner.de/kabel.htm